



齒輪馬達減速機

REDUCER MOTOR SPEED REDUCER
MOTOR SPEED REDUCER



SH series

齒輪馬達減速機

MOTOR SPEED REDUCER

潤滑 LUBRICATION

新型潤滑構造減少 15% 油量
New lubricating construction,
reducing 15% oil quantity.

電動馬達 ELECTRIC MOTOR

特殊型、錐形法蘭馬達
Special Tapered Frange
Motor

齒輪減速器 GEAR REDUCER

出力軸 OUTPUT SHAFT

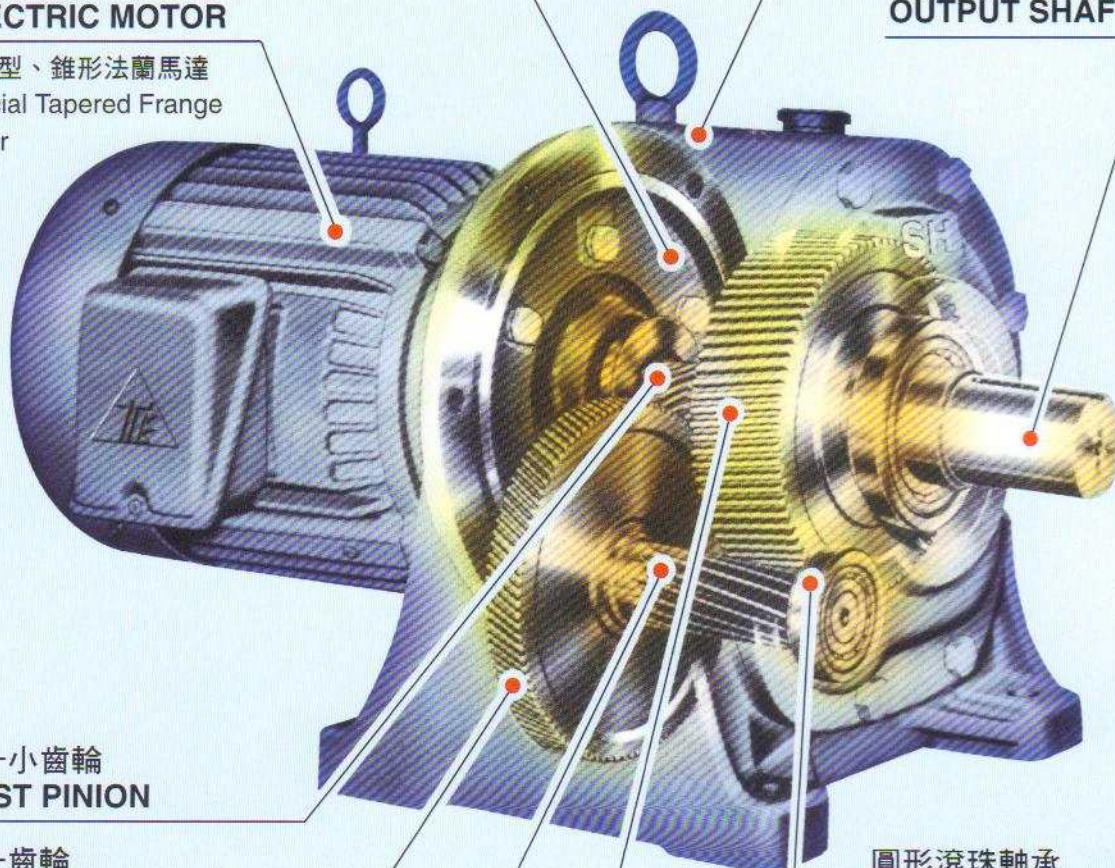
第一小齒輪 FIRST PINION

第一齒輪 FIRST GEAR

第二小齒輪 SECOND PINION

圓形滾珠軸承 TAPER ROLLER BEARING

第二齒輪 SECOND GEAR



| | | |
|--------------|-------------------------------------|---|
| 如何選擇定格馬力與型號 | HOW TO SELECT RATED HP AND THE TYPE | 2 |
| 馬達KW之選定表 | CHOISE TABLE OF MOTOR KW | 3 |
| SHE型齒輪馬達減速機 | SHE TYPE GEAR MOTOR SPEED REDUCER | 4 |
| SHV型齒輪馬達減速機 | SHV TYPE GEAR MOTOR SPEED REDUCER | 5 |
| SHVE型齒輪馬達減速機 | SHVE TYPE GEAR MOTOR SPEED REDUCER | 6 |
| SHVV型齒輪馬達減速機 | SHVV TYPE GEAR MOTOR SPEED REDUCER | 7 |
| SHW型齒輪馬達減速機 | SHW TYPE GEAR MOTOR SPEED REDUCER | 8 |
| SHVW型齒輪馬達減速機 | SHVW TYPE GEAR MOTOR SPEED REDUCER | 9 |

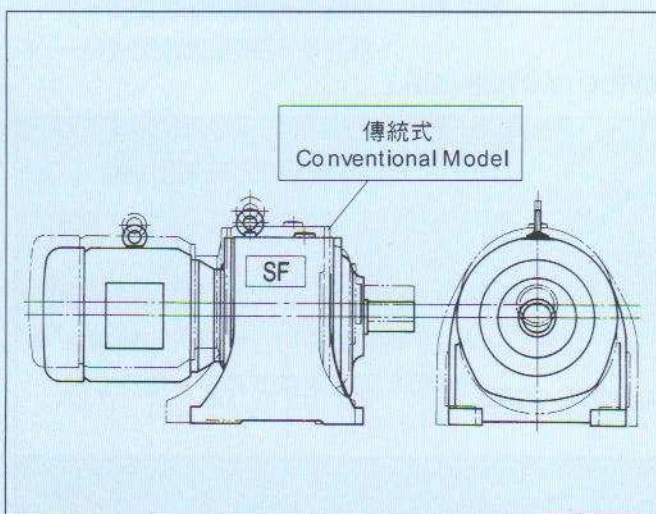
高功率傳輸效率：一次減速為98%，二次減速為97%

High Power Transmission Efficiency:

98%; For Single Reduction, 97% For Double Reduction.

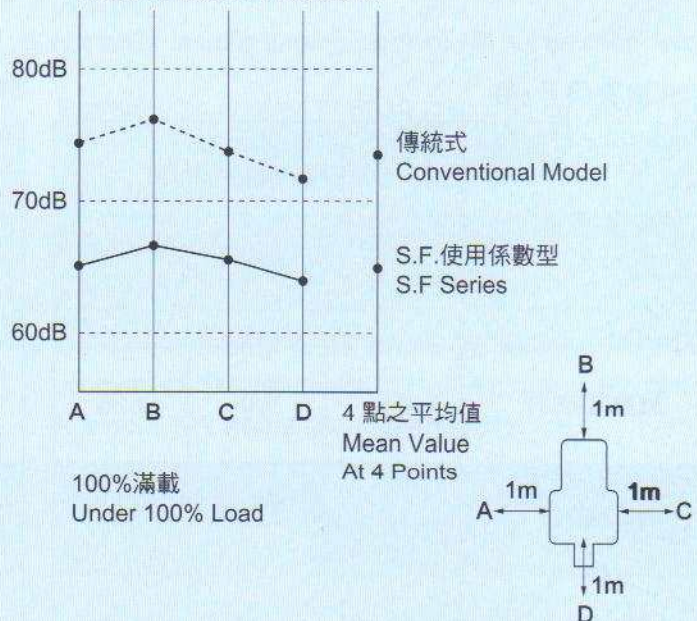
- | | |
|----------------|------------------------------------|
| (1) 堅固重量輕 | (1) Compact and Light Weight |
| (2) 操作順利而安靜 | (2) Smooth & Quiet Operation |
| (3) 耐久AGMA 2定額 | (3) Long Life AGMA II Rating |
| (4) 有效潤滑 | (4) Effective Lubrication |
| (5) 構造簡單而牢固 | (5) Simple and Sturdy Construction |

尺寸比較 COMPARISON IN SIZE



比傳統式減少 20% 重量及 30% 之安裝空間
Compared with the conventional model 20% less in weight
and 30% smaller in installation area

噪音比較 NOISE COMPARISON



如何選擇定格馬力與型號

HOW TO SELECT RATED HP AND THE TYPE

〔選擇例〕

1. 理論馬力：10 HP.
2. 出力轉速：58 R.P.M.
3. 使用狀況：普通負荷24小時操作
4. 使用馬達：60Hz/ 4極/ 1750 R.P.M.

〔EXAMPLE〕

1. Theoretical Horsepower: 10HP
2. Output Revolutions: 58 R.P.M.
3. Use Condition: Operation under normal load for 24 hours.
4. Motor used: 4 poles, 1750 R.P.M.

〔解〕

〔SOLUTION〕

$$\text{減速比} = \frac{58}{1750} \div \frac{1}{30}$$

$$\text{Reducing Ratio} = \frac{58}{1750} \div \frac{1}{30}$$

定格馬力 (HP) = 理論馬力 (HP) x S.F.

Rated HP = Theoretical HP x S.F.

S.F. = 使用係數

S.F. = Service Factor

使用係數 S.F. = 1.5

S.F. = 1.5

減速機定格馬力 (HP) = 10 x 1.5 = 15 HP

Rated HP of speed reducer = 10 x 1.5 = 15 HP

● 由下表可選用型號為 SF-65 型。

● From the list below, we know our choice will be WLH-65 Model.

使用係數表 (S.F. 值)

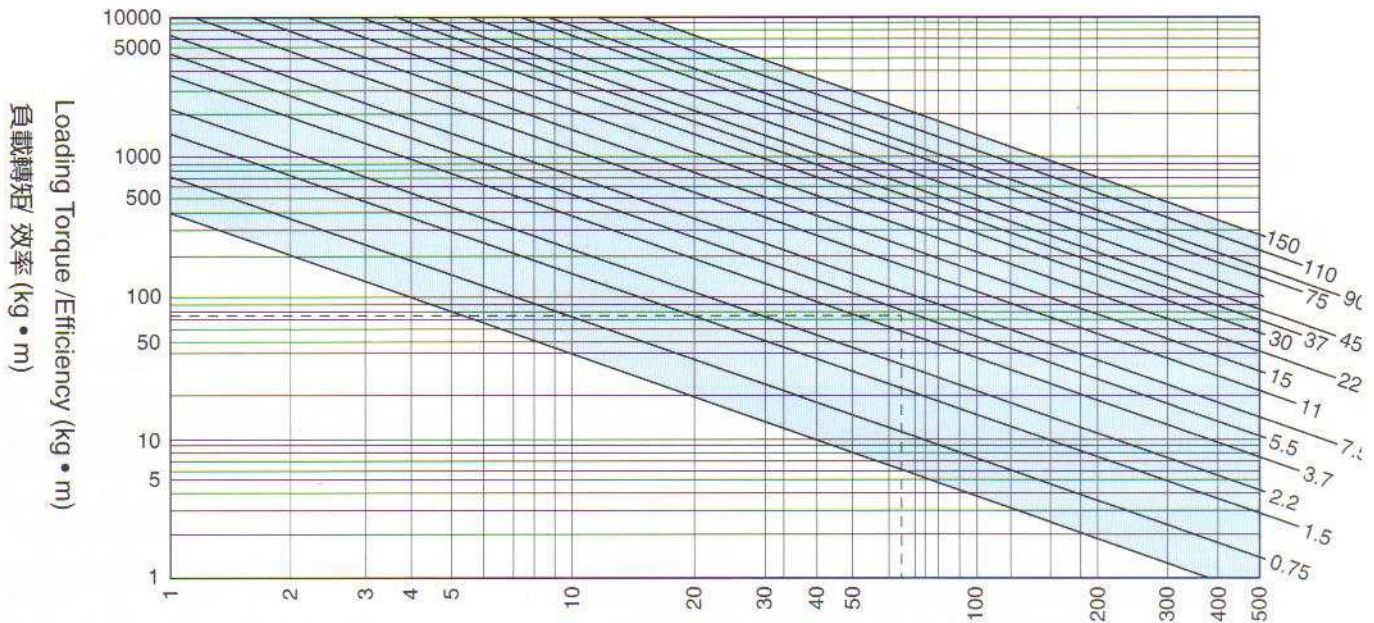
| 負荷狀況 | 每日使用時間(小時) | | |
|---------|------------|------|-------|
| | 8以下 | 8~16 | 16~24 |
| 圓滑載荷(1) | 0.8 | 1.0 | 1.25 |
| 普通載荷(2) | 1.0 | 1.25 | 1.5 |
| 衝擊載荷(3) | 1.25 | 1.5 | 1.75 |

SERVICE FACTOR (S.F.)

| LOAD CONDITION | 每日使用時間(小時) | | |
|-------------------|------------|------|-------|
| | 8以下 | 8~16 | 16~24 |
| SMOOTH LOAD | 0.8 | 1.0 | 1.25 |
| NORMAL LOAD | 1.0 | 1.25 | 1.5 |
| IMPACT LOAD | 1.25 | 1.5 | 1.75 |

馬達KW/HP之選定表

CHOISE TABLE OF MOTOR KW/HP



標準回轉數 Standard Rotation: (50 Hz) 33, 50, 75, 150 (60 Hz) 40, 60, 90, 180
 齒輪馬達輸出軸回轉速 (rpm) (低轉軸) R.P.M. of output Shaft (Low speed)

1. 本選定表係依標準馬達(低壓三相鼠籠型感應電動機, E 級絕緣)使用而言, 對於起動頻繁, 變動負載等特殊條件者不在此限。
2. 馬達所需KW = $\frac{\text{必要負載轉矩}}{\text{減速機效率}}$
3. 減速機效率二段式為95%, 三段式為92%矩計。
4. 必需負載轉矩如為變動負載以其等值轉矩表示之, 如負載變動循環不明時, 以最大轉。
5. 一般對於起動轉矩不予考慮。

例: 於60Hz地區, 所需低速回軸回轉速為60 rpm 最大轉矩為70 kg·m。

1. This table is based on service of standard motors (low pressure, 3 phase, rat-cage type induction motor, E-grade insulation), not applicable for frequent startings, variable loads and such special requirements.
2. MOTOR KW = $\frac{\text{Necessary negative load turning moment}}{\text{Efficiency of speed reducer}}$
3. Efficiency of speed reducer: 95% for two-sections, 92% for 3 section.
4. Necessary negative load turning moment: to be indicated by its equivalent turning moment for variable load variation.
5. Normally, starting turning moment will not be considered.

Example : In an area of 60 Hz, required low-speed shaft revolution is 60 rpm, while the maximum turning moment is 70 kg·m.

$$\frac{\text{負載轉矩}}{\text{效率}} = \frac{70}{0.95} = 73.7 \text{ kg·m。}$$

$$\frac{\text{Negative load turning moment}}{\text{Efficiency}} = \frac{70}{0.95} = 73.7 \text{ kg·m.}$$

- 負載轉矩 73.7 kg·m 之橫線與 60 rpm 之垂直線之交點, 可得知馬達使用 5.5Kw。

- On the intersection of horizontal line for negative turning moment of 73.7 kg·m with the vertical line of 60 rpm, we know 5.5 KW will be used for the motor.

計算值:

$$\text{馬達 KW} = \frac{T \times N}{974} = \frac{73.7 \times 60}{974} = 4.6 \text{ KW。}$$

$$\text{馬達 HP} = \frac{T \times N}{716.2} = \frac{73.7 \times 60}{716.2} = 6.17 \text{ HP。}$$

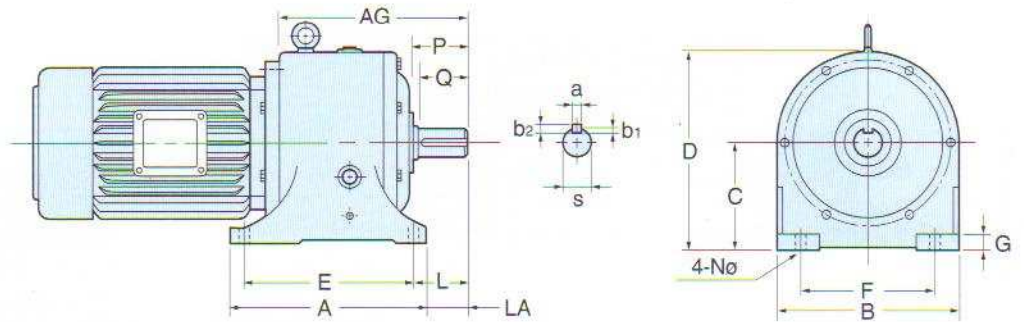
CALCULATION VALUE

$$\text{MOTOR KW} = \frac{T \times N}{974} = \frac{73.7 \times 60}{974} = 4.6 \text{ KW.}$$

$$\text{MOTOR HP} = \frac{T \times N}{716.2} = \frac{73.7 \times 60}{716.2} = 6.17 \text{ HP.}$$

SHE型橫式齒輪馬達減速機

SHE TYPE GEAR MOTOR SPEED REDUCER



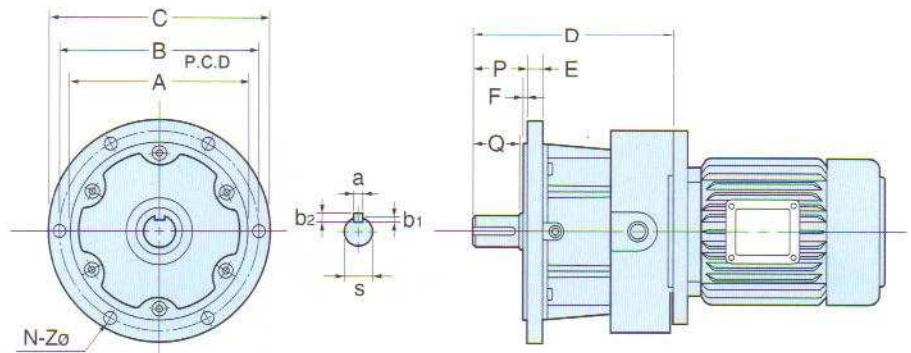
尺寸表 (MEASUREMENTS):

單位(Unit):m/m

| 減速比 Reducing Ratio | 馬力 HP | | 型號 Mode SHE | A | AG | B | C | D | L | E | G | F | LA | N | 軸端 SHAFT END | | | | | |
|--------------------------|----------|-------|-------------------|-----|-----|-----|-----|-----|-----|-----|----|-----|-----|----|--------------|----|-----|----|-------|-----|
| | 4P | 6P | | | | | | | | | | | | | s | a | b1 | b2 | p | Q |
| 1/4 | 1/4 | | 25 | 195 | 176 | 205 | 110 | 200 | 62 | 155 | 20 | 150 | 40 | 11 | 25 | 7 | 4 | 7 | 54 | 45 |
| | 1/2 | 1/4 | 25 | 195 | 176 | 205 | 110 | 200 | 62 | 155 | 20 | 150 | 40 | 11 | 25 | 7 | 4 | 7 | 54 | 45 |
| | 1 | 1/2 | 30 | 240 | 217 | 233 | 120 | 225 | 60 | 200 | 25 | 170 | 40 | 11 | 30 | 7 | 4 | 7 | 60.5 | 55 |
| | 2 | 1 | 35 | 240 | 222 | 233 | 120 | 225 | 65 | 200 | 25 | 170 | 45 | 13 | 35 | 10 | 4.5 | 8 | 65.5 | 60 |
| | 3 | 2 | 40 | 260 | 248 | 265 | 135 | 255 | 71 | 230 | 27 | 190 | 50 | 13 | 40 | 10 | 4.5 | 8 | 70.5 | 65 |
| 1/20 | 5 | 3 | 45 | 290 | 265 | 295 | 155 | 290 | 75 | 240 | 28 | 220 | 50 | 15 | 45 | 12 | 5.5 | 10 | 75.5 | 70 |
| | 7-1/2 | 5 | 50 | 312 | 301 | 340 | 175 | 330 | 80 | 270 | 30 | 270 | 60 | 15 | 50 | 12 | 5.5 | 10 | 85.5 | 80 |
| | 10 | 7-1/2 | 55 | 360 | 338 | 390 | 205 | 380 | 106 | 300 | 32 | 310 | 78 | 18 | 55 | 15 | 6.5 | 12 | 95.5 | 90 |
| | 15 | 10 | 65 | 395 | 361 | 425 | 240 | 435 | 103 | 340 | 35 | 330 | 80 | 18 | 65 | 18 | 6.5 | 12 | 105.5 | 100 |
| | 20 | 15 | 75 | 445 | 382 | 480 | 265 | 485 | 112 | 380 | 38 | 370 | 80 | 21 | 75 | 20 | 7 | 13 | 120.5 | 115 |
| 1/21 | 30 | 20 | 90 | 495 | 438 | 530 | 295 | 540 | 148 | 430 | 40 | 420 | 120 | 21 | 90 | 24 | 8.5 | 16 | 145.5 | 140 |
| | 40 | 30 | 100 | 540 | 540 | 600 | 340 | 610 | 222 | 470 | 43 | 480 | 187 | 24 | 100 | 28 | 8.5 | 16 | 170.5 | 165 |
| | 1/4 | | 25 | 195 | 176 | 205 | 110 | 200 | 62 | 155 | 20 | 150 | 40 | 11 | 25 | 7 | 4 | 7 | 54 | 45 |
| | 1/2 | 1/4 | 25 | 195 | 176 | 205 | 110 | 200 | 62 | 155 | 20 | 150 | 40 | 11 | 25 | 7 | 4 | 7 | 54 | 45 |
| | 1 | 1/2 | 35 | 240 | 222 | 233 | 120 | 225 | 65 | 200 | 25 | 170 | 45 | 13 | 35 | 10 | 4.5 | 8 | 65.5 | 60 |
| 1/30 | 2 | 1 | 40 | 260 | 248 | 265 | 135 | 255 | 71 | 230 | 27 | 190 | 50 | 13 | 40 | 10 | 4.5 | 8 | 70.5 | 65 |
| | 3 | 2 | 45 | 284 | 265 | 295 | 155 | 290 | 75 | 240 | 28 | 220 | 50 | 15 | 45 | 12 | 5.5 | 10 | 75.5 | 70 |
| | 5 | 3 | 50 | 312 | 301 | 340 | 175 | 330 | 80 | 270 | 30 | 270 | 60 | 15 | 50 | 12 | 5.5 | 10 | 85.5 | 80 |
| | 7-1/2 | 5 | 55 | 360 | 338 | 390 | 205 | 380 | 106 | 300 | 32 | 310 | 78 | 18 | 55 | 15 | 6.5 | 12 | 95.5 | 90 |
| | 10 | 7-1/2 | 65 | 395 | 361 | 425 | 240 | 435 | 103 | 340 | 35 | 330 | 80 | 18 | 65 | 18 | 6.5 | 12 | 105.5 | 100 |
| 1/31 | 15 | 10 | 75 | 445 | 382 | 480 | 265 | 485 | 112 | 380 | 38 | 370 | 80 | 21 | 75 | 20 | 7 | 13 | 120.5 | 115 |
| | 20 | 15 | 90 | 495 | 438 | 530 | 295 | 540 | 148 | 430 | 40 | 420 | 120 | 21 | 90 | 24 | 8.5 | 16 | 145.5 | 140 |
| | 30 | 20 | 100 | 540 | 540 | 600 | 340 | 610 | 222 | 470 | 43 | 480 | 187 | 24 | 100 | 28 | 8.5 | 16 | 170.5 | 165 |
| | 1/4 | | 25 | 203 | 197 | 200 | 110 | 200 | 62 | 155 | 20 | 150 | 40 | 11 | 25 | 7 | 4 | 7 | 54 | 45 |
| | 1/2 | 1/4 | 25 | 203 | 197 | 200 | 110 | 200 | 62 | 155 | 20 | 150 | 40 | 11 | 25 | 7 | 4 | 7 | 54 | 45 |
| 1/60 | 1 | 1/2 | 35 | 255 | 245 | 230 | 120 | 225 | 65 | 200 | 25 | 170 | 45 | 13 | 35 | 10 | 4.5 | 8 | 65.5 | 60 |
| | 2 | 1 | 40 | 273 | 264 | 265 | 135 | 255 | 73 | 230 | 27 | 190 | 50 | 13 | 40 | 10 | 4.5 | 8 | 70.5 | 65 |
| | 3 | 2 | 45 | 290 | 290 | 295 | 155 | 290 | 75 | 240 | 28 | 220 | 55 | 15 | 45 | 12 | 5.5 | 10 | 75.5 | 70 |
| | 5 | 3 | 50 | 333 | 326 | 340 | 175 | 330 | 91 | 270 | 30 | 270 | 60 | 15 | 50 | 12 | 5.5 | 10 | 85.5 | 80 |
| | 7-1/2 | 5 | 55 | 364 | 356 | 390 | 205 | 389 | 95 | 300 | 32 | 310 | 74 | 18 | 55 | 15 | 6.5 | 12 | 95.5 | 90 |
| 1/61 | 10 | 7-1/2 | 65 | 395 | 383 | 425 | 240 | 435 | 113 | 340 | 35 | 330 | 80 | 18 | 65 | 18 | 6.5 | 12 | 105.5 | 100 |
| | 15 | 10 | 75 | 445 | 417 | 480 | 265 | 485 | 112 | 380 | 38 | 370 | 80 | 21 | 75 | 20 | 7 | 13 | 120.5 | 115 |
| | 20 | 15 | 90 | 495 | 473 | 535 | 295 | 540 | 148 | 430 | 40 | 420 | 120 | 21 | 90 | 24 | 8.5 | 16 | 145.5 | 140 |
| | 30 | 20 | 100 | 540 | 595 | 600 | 340 | 610 | 222 | 470 | 43 | 480 | 187 | 24 | 100 | 28 | 8.5 | 16 | 170.5 | 165 |
| | 1/4 | | 25 | 203 | 197 | 200 | 110 | 200 | 62 | 155 | 20 | 150 | 40 | 11 | 25 | 7 | 4 | 7 | 54 | 45 |
| 1/120 | 1/2 | 1/4 | 35 | 258 | 245 | 230 | 120 | 225 | 65 | 200 | 25 | 170 | 45 | 13 | 35 | 10 | 4.5 | 8 | 65.5 | 60 |
| | 1 | 1/2 | 40 | 273 | 264 | 265 | 135 | 255 | 73 | 230 | 27 | 190 | 50 | 13 | 40 | 10 | 4.5 | 8 | 70.5 | 65 |
| | 2 | 1 | 45 | 290 | 290 | 295 | 155 | 290 | 75 | 240 | 28 | 220 | 55 | 15 | 45 | 12 | 5.5 | 10 | 75.5 | 70 |
| | 3 | 2 | 50 | 333 | 326 | 340 | 175 | 330 | 91 | 270 | 30 | 270 | 60 | 15 | 50 | 12 | 5.5 | 10 | 85.5 | 80 |
| | 5 | 3 | 55 | 364 | 356 | 390 | 205 | 389 | 95 | 300 | 32 | 310 | 74 | 18 | 55 | 15 | 6.5 | 12 | 95.5 | 90 |
| 1/120 | 7-1/2 | 5 | 65 | 390 | 383 | 425 | 240 | 435 | 113 | 340 | 35 | 330 | 80 | 18 | 65 | 18 | 6.5 | 12 | 105.5 | 100 |
| | 10 | 7-1/2 | 75 | 445 | 417 | 480 | 265 | 485 | 112 | 380 | 38 | 370 | 80 | 21 | 75 | 20 | 7 | 13 | 120.5 | 115 |
| | 15 | 10 | 90 | 495 | 473 | 535 | 295 | 540 | 148 | 430 | 40 | 420 | 120 | 21 | 90 | 24 | 8.5 | 16 | 145.5 | 140 |
| | 20 | 15 | 100 | 540 | 595 | 600 | 340 | 610 | 222 | 470 | 43 | 480 | 187 | 24 | 100 | 28 | 8.5 | 16 | 170.5 | 165 |

SHV型立式齒輪馬達減速機

SHV TYPE GEAR MOTOR SPEED REDUCER



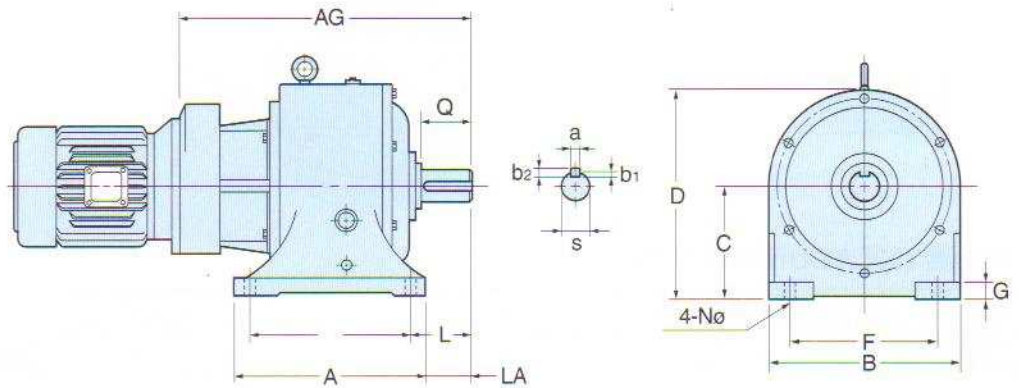
尺寸表 (MEASUREMENTS):

單位(Unit):m/m

| 減速比 Reducing Ratio | 馬力 HP | | 型號 Mode SHV | A | B | C | D | E | F | N | Z | 軸端 SHAFT END | | | | | |
|--------------------------|----------|-------|-------------------|-----|-----|-----|-------|----|-----|---|----|--------------|----|-----|----|-------|-----|
| | 4P | 6P | | | | | | | | | | s | a | b1 | b2 | p | Q |
| 1/4 | 1/4 | | 25 | 170 | 190 | 210 | 178 | 10 | 2.5 | 6 | 11 | 25 | 7 | 4 | 7 | 54 | 45 |
| | 1/2 | 1/4 | 25 | 170 | 190 | 210 | 178 | 10 | 2.5 | 6 | 11 | 25 | 7 | 4 | 7 | 54 | 45 |
| | 1 | 1/2 | 30 | 200 | 225 | 250 | 221.5 | 12 | 3.5 | 6 | 11 | 30 | 7 | 4 | 7 | 60.5 | 55 |
| | 2 | 1 | 35 | 200 | 225 | 250 | 221.5 | 12 | 3.5 | 6 | 13 | 35 | 10 | 4.5 | 8 | 65.5 | 60 |
| | 3 | 2 | 40 | 230 | 255 | 280 | 245.5 | 13 | 3.5 | 6 | 13 | 40 | 10 | 4.5 | 8 | 70.5 | 65 |
| | 5 | 3 | 45 | 260 | 290 | 320 | 260.5 | 15 | 3.5 | 6 | 15 | 45 | 12 | 5.5 | 10 | 75.5 | 70 |
| 1/20 | 7-1/2 | 5 | 50 | 290 | 320 | 350 | 300.5 | 15 | 4.5 | 6 | 15 | 50 | 12 | 5.5 | 10 | 85.5 | 80 |
| | 10 | 7-1/2 | 55 | 340 | 375 | 410 | 330.5 | 17 | 4.5 | 6 | 18 | 55 | 15 | 6.5 | 12 | 95.5 | 90 |
| | 15 | 10 | 65 | 380 | 420 | 460 | 355.5 | 18 | 4.5 | 6 | 18 | 65 | 18 | 6.5 | 12 | 105.5 | 100 |
| | 20 | 15 | 75 | 430 | 470 | 510 | 385.5 | 20 | 4.5 | 6 | 21 | 75 | 20 | 7 | 13 | 120.5 | 115 |
| | 30 | 20 | 90 | 480 | 520 | 560 | 450.5 | 20 | 4.5 | 6 | 21 | 90 | 24 | 8.5 | 16 | 145.5 | 140 |
| 1/21 | 40 | 30 | 100 | 530 | 580 | 630 | 511.5 | 22 | 4.5 | 6 | 24 | 100 | 28 | 8.5 | 16 | 170.5 | 165 |
| | 1/4 | | 25 | 170 | 190 | 210 | 178 | 10 | 2.5 | 6 | 11 | 25 | 7 | 4 | 7 | 54 | 45 |
| | 1/2 | 1/4 | 25 | 170 | 190 | 210 | 178 | 10 | 2.5 | 6 | 11 | 25 | 7 | 4 | 7 | 54 | 45 |
| | 1 | 1/2 | 35 | 200 | 225 | 250 | 221.5 | 12 | 3.5 | 6 | 13 | 35 | 10 | 4.5 | 8 | 65.5 | 60 |
| | 2 | 1 | 40 | 230 | 255 | 280 | 245.5 | 13 | 3.5 | 6 | 13 | 40 | 10 | 4.5 | 8 | 70.5 | 65 |
| 1/30 | 3 | 2 | 45 | 260 | 290 | 320 | 260.5 | 15 | 3.5 | 6 | 15 | 45 | 12 | 5.5 | 10 | 75.5 | 70 |
| | 5 | 3 | 50 | 290 | 320 | 350 | 300.5 | 15 | 4.5 | 6 | 15 | 50 | 12 | 5.5 | 10 | 85.5 | 80 |
| | 7-1/2 | 5 | 55 | 340 | 375 | 410 | 330.5 | 17 | 4.5 | 6 | 18 | 55 | 15 | 6.5 | 12 | 95.5 | 90 |
| | 10 | 7-1/2 | 65 | 380 | 420 | 460 | 355.5 | 18 | 4.5 | 6 | 18 | 65 | 18 | 6.5 | 12 | 105.5 | 100 |
| | 15 | 10 | 75 | 430 | 470 | 510 | 385.5 | 20 | 4.5 | 6 | 21 | 75 | 20 | 7 | 13 | 120.5 | 115 |
| 1/31 | 20 | 15 | 90 | 480 | 520 | 560 | 450.5 | 20 | 4.5 | 6 | 21 | 90 | 24 | 8.5 | 16 | 145.5 | 140 |
| | 30 | 20 | 100 | 530 | 580 | 630 | 511.5 | 22 | 4.5 | 6 | 24 | 100 | 28 | 8.5 | 16 | 170.5 | 165 |
| | 1/4 | | 25 | 170 | 190 | 210 | 195 | 10 | 2.5 | 6 | 11 | 25 | 7 | 4 | 7 | 54 | 45 |
| | 1/2 | 1/4 | 25 | 170 | 190 | 210 | 195 | 10 | 2.5 | 6 | 11 | 25 | 7 | 4 | 7 | 54 | 45 |
| | 1 | 1/2 | 35 | 200 | 225 | 250 | 247.5 | 12 | 3.5 | 6 | 13 | 35 | 10 | 4.5 | 8 | 65.5 | 60 |
| 1/60 | 2 | 1 | 40 | 230 | 255 | 280 | 276.5 | 13 | 3.5 | 6 | 13 | 40 | 10 | 4.5 | 8 | 70.5 | 65 |
| | 3 | 2 | 45 | 260 | 290 | 320 | 296.5 | 15 | 3.5 | 6 | 15 | 45 | 12 | 5.5 | 10 | 75.5 | 70 |
| | 5 | 3 | 50 | 290 | 320 | 350 | 332.5 | 15 | 4.5 | 6 | 15 | 50 | 12 | 5.5 | 10 | 85.5 | 80 |
| | 7-1/2 | 5 | 55 | 340 | 375 | 410 | 365.5 | 17 | 4.5 | 6 | 18 | 55 | 15 | 6.5 | 12 | 95.5 | 90 |
| | 10 | 7-1/2 | 65 | 380 | 420 | 460 | 392.5 | 18 | 4.5 | 6 | 18 | 65 | 18 | 6.5 | 12 | 105.5 | 100 |
| 1/61 | 15 | 10 | 75 | 430 | 470 | 510 | 433.5 | 20 | 4.5 | 6 | 21 | 75 | 20 | 7 | 13 | 120.5 | 115 |
| | 20 | 15 | 90 | 480 | 520 | 560 | 489.5 | 20 | 4.5 | 6 | 21 | 90 | 24 | 8.5 | 16 | 145.5 | 140 |
| | 30 | 20 | 100 | 530 | 580 | 630 | 547.5 | 22 | 4.5 | 6 | 24 | 100 | 28 | 8.5 | 16 | 170.5 | 165 |
| | 1/4 | | 25 | 170 | 190 | 210 | 195 | 10 | 2.5 | 6 | 11 | 25 | 7 | 4 | 7 | 54 | 45 |
| | 1/2 | 1/4 | 35 | 200 | 225 | 250 | 247.5 | 12 | 3.5 | 6 | 13 | 35 | 10 | 4.5 | 8 | 65.5 | 60 |
| 1/120 | 1 | 1/2 | 40 | 230 | 255 | 280 | 276.5 | 13 | 3.5 | 6 | 13 | 40 | 10 | 4.5 | 8 | 70.5 | 65 |
| | 2 | 1 | 45 | 260 | 290 | 320 | 296.5 | 15 | 3.5 | 6 | 15 | 45 | 12 | 5.5 | 10 | 75.5 | 70 |
| | 3 | 2 | 50 | 290 | 320 | 350 | 332.5 | 15 | 4.5 | 6 | 15 | 50 | 12 | 5.5 | 10 | 85.5 | 80 |
| | 5 | 3 | 55 | 340 | 375 | 410 | 365.5 | 17 | 4.5 | 6 | 18 | 55 | 15 | 6.5 | 12 | 95.5 | 90 |
| | 7-1/2 | 5 | 65 | 380 | 420 | 460 | 392.5 | 18 | 4.5 | 6 | 18 | 65 | 18 | 6.5 | 12 | 105.5 | 100 |
| 1/120 | 10 | 7-1/2 | 75 | 430 | 470 | 510 | 433.5 | 20 | 4.5 | 6 | 21 | 75 | 20 | 7 | 13 | 120.5 | 115 |
| | 15 | 10 | 90 | 480 | 520 | 560 | 489.5 | 20 | 4.5 | 6 | 21 | 90 | 24 | 8.5 | 16 | 145.5 | 140 |
| | 20 | 15 | 100 | 530 | 580 | 630 | 547.5 | 22 | 4.5 | 6 | 24 | 100 | 28 | 8.5 | 16 | 170.5 | 165 |

SHVE型橫式齒輪馬達減速機

SHVE TYPE GEAR MOTOR SPEED REDUCER



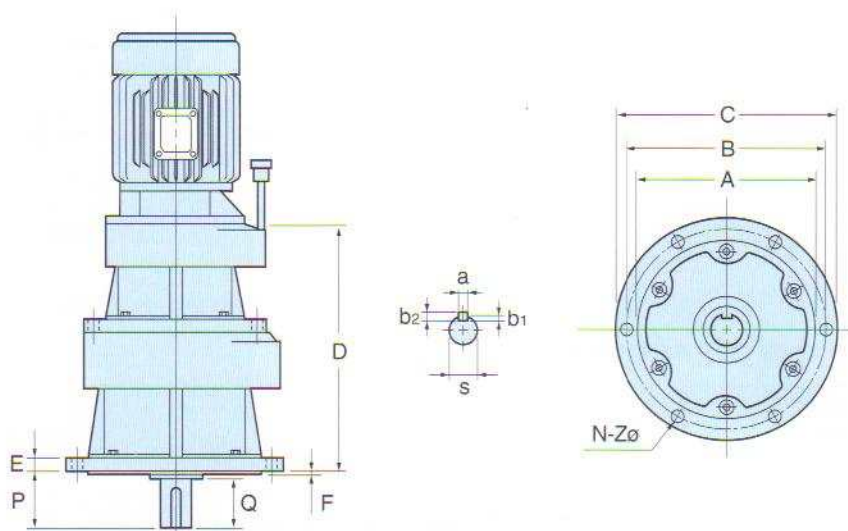
尺寸表(MEASUREMENTS):

單位(Unit):m/m

| 減速比 Reducing Ratio | 馬力 HP | | 型號 Mode SHVE | A | AG | B | C | D | L | E | G | F | LA | N | 軸端 SHAFT END | | | | | |
|--------------------------|----------|-------|--------------------|-----|-------|-----|-----|-----|-----|-----|----|-----|-----|----|--------------|----|-----|----|-------|-----|
| | 4P | 6P | | | | | | | | | | | | | s | a | b1 | b2 | p | Q |
| 1/121 | 1/4-1/2 | 1/4 | 25--40 | 260 | 375 | 265 | 135 | 255 | 71 | 230 | 27 | 190 | 50 | 13 | 40 | 10 | 4.5 | 8 | 70.5 | 65 |
| | 1 | 1/2 | 30--45 | 290 | 423 | 295 | 155 | 290 | 75 | 240 | 28 | 220 | 50 | 15 | 45 | 12 | 5.5 | 10 | 75.5 | 70 |
| | 2 | 1 | 35--50 | 312 | 460 | 340 | 175 | 330 | 80 | 270 | 30 | 270 | 60 | 15 | 50 | 12 | 5.5 | 10 | 85.5 | 80 |
| | 3 | 2 | 40--55 | 360 | 512 | 390 | 205 | 380 | 106 | 300 | 32 | 310 | 78 | 18 | 55 | 15 | 6.5 | 12 | 95.5 | 90 |
| | 5 | 3 | 45--65 | 395 | 546 | 425 | 240 | 435 | 103 | 340 | 35 | 330 | 80 | 18 | 65 | 18 | 6.5 | 12 | 105.5 | 100 |
| 1/400 | 7-1/2 | 5 | 50--75 | 445 | 591 | 480 | 265 | 485 | 112 | 380 | 38 | 370 | 80 | 21 | 75 | 20 | 7 | 13 | 120.5 | 115 |
| | 10 | 7-1/2 | 55--90 | 495 | 672 | 530 | 295 | 540 | 148 | 430 | 40 | 420 | 120 | 21 | 90 | 24 | 8.5 | 16 | 145.5 | 140 |
| | 15 | 10 | 65--100 | 540 | 793 | 600 | 340 | 610 | 222 | 470 | 43 | 480 | 187 | 24 | 100 | 28 | 8.5 | 16 | 170.5 | 165 |
| 1/401 | 1/4-1/2 | 1/4 | 25--40 | 260 | 375 | 265 | 135 | 255 | 71 | 230 | 27 | 190 | 50 | 13 | 40 | 10 | 4.5 | 8 | 70.5 | 65 |
| | 1 | 1/2 | 35--50 | 312 | 482 | 340 | 175 | 330 | 80 | 270 | 30 | 270 | 60 | 15 | 50 | 12 | 5.5 | 10 | 85.5 | 80 |
| | 2 | 1 | 40--55 | 360 | 512 | 390 | 205 | 380 | 106 | 300 | 32 | 310 | 78 | 18 | 55 | 15 | 6.5 | 12 | 95.5 | 90 |
| | 3 | 2 | 45--65 | 395 | 546 | 425 | 240 | 435 | 103 | 340 | 35 | 330 | 80 | 18 | 65 | 18 | 6.5 | 12 | 105.5 | 100 |
| | 5 | 3 | 50--75 | 445 | 591 | 480 | 265 | 485 | 112 | 380 | 38 | 370 | 80 | 21 | 75 | 20 | 7 | 13 | 120.5 | 115 |
| 1/900 | 7-1/2 | 5 | 55--90 | 495 | 672 | 530 | 295 | 540 | 148 | 430 | 40 | 420 | 120 | 21 | 90 | 24 | 8.5 | 16 | 145.5 | 140 |
| | 10 | 7-1/2 | 65--100 | 540 | 793 | 600 | 340 | 610 | 222 | 470 | 43 | 480 | 187 | 24 | 100 | 28 | 8.5 | 16 | 170.5 | 165 |
| 1/901 | 1/4-1/2 | 1/4 | 25--45 | 290 | 406 | 295 | 155 | 290 | 75 | 240 | 28 | 220 | 50 | 15 | 45 | 12 | 5.5 | 10 | 75.5 | 70 |
| | 1 | 1/2 | 35--50 | 312 | 482 | 340 | 175 | 330 | 80 | 270 | 30 | 270 | 60 | 15 | 50 | 12 | 5.5 | 10 | 85.5 | 80 |
| | 2 | 1 | 40--55 | 360 | 531 | 390 | 205 | 380 | 106 | 300 | 32 | 310 | 78 | 18 | 55 | 15 | 6.5 | 12 | 95.5 | 90 |
| | 3 | 2 | 45--65 | 395 | 571.5 | 425 | 240 | 435 | 103 | 340 | 35 | 330 | 80 | 18 | 65 | 18 | 6.5 | 12 | 105.5 | 100 |
| 1/1800 | 5 | 3 | 50--75 | 445 | 617 | 480 | 265 | 485 | 112 | 380 | 38 | 370 | 80 | 21 | 75 | 20 | 7 | 13 | 120.5 | 115 |
| | 7-1/2 | 5 | 55--90 | 495 | 692 | 530 | 295 | 540 | 148 | 430 | 40 | 420 | 120 | 21 | 90 | 24 | 8.5 | 16 | 145.5 | 140 |
| | 10 | 7-1/2 | 65--100 | 540 | 818 | 600 | 340 | 610 | 222 | 470 | 43 | 480 | 187 | 24 | 100 | 28 | 8.5 | 16 | 170.5 | 165 |

SHVV型立式齒輪馬達減速機

SHVV TYPE GEAR MOTOR SPEED REDUCER



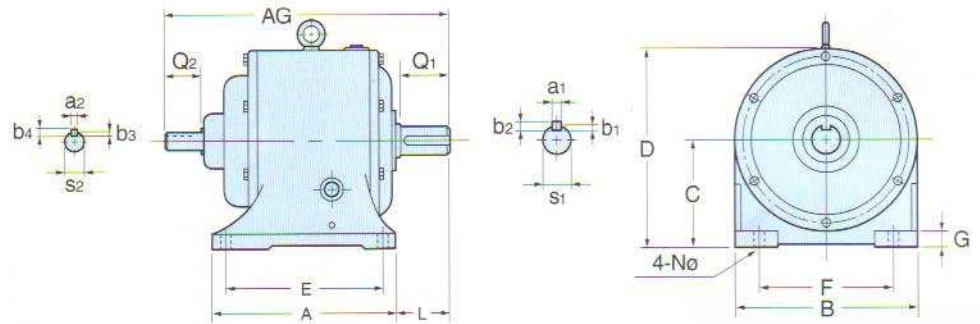
尺寸表 (MEASUREMENTS):

單位(Unit):m/m

| 減速比 Reducing Ratio | 馬力 HP | | 型號 Mode SHVV | A | B | C | D | E | F | N | Z | 軸端 SHAFT END | | | | | |
|--------------------------|----------|-------|--------------------|-----|-----|-----|-------|----|-----|---|----|--------------|----|-----|----|-------|-----|
| | 4P | 6P | | | | | | | | | | s | a | b1 | b2 | p | Q |
| 1/121 | 1/4-1/2 | 1/4 | 25--40 | 230 | 255 | 280 | 372 | 13 | 3.5 | 6 | 13 | 40 | 10 | 4.5 | 8 | 70.5 | 65 |
| | 1 | 1/2 | 30--45 | 260 | 290 | 320 | 418 | 15 | 3.5 | 6 | 15 | 45 | 12 | 5.5 | 10 | 75.5 | 70 |
| | 2 | 1 | 35--50 | 290 | 320 | 350 | 458 | 15 | 4.5 | 6 | 15 | 50 | 12 | 5.5 | 10 | 85.5 | 80 |
| | 3 | 2 | 40--55 | 340 | 375 | 410 | 504 | 17 | 4.5 | 6 | 18 | 55 | 15 | 6.5 | 12 | 95.5 | 90 |
| | 5 | 3 | 45--65 | 380 | 420 | 460 | 540 | 18 | 4.5 | 6 | 18 | 65 | 18 | 6.5 | 12 | 105.5 | 100 |
| 1/400 | 7-1/2 | 5 | 50--75 | 430 | 470 | 510 | 604 | 20 | 4.5 | 6 | 21 | 75 | 20 | 7 | 13 | 120.5 | 115 |
| | 10 | 7-1/2 | 55--90 | 480 | 520 | 560 | 684 | 20 | 4.5 | 6 | 21 | 90 | 24 | 8.5 | 16 | 145.5 | 140 |
| | 15 | 10 | 65-100 | 530 | 580 | 630 | 765 | 22 | 4.5 | 6 | 24 | 100 | 28 | 8.5 | 16 | 170.5 | 165 |
| 1/401 | 1/4-1/2 | 1/4 | 25--40 | 230 | 255 | 280 | 372 | 13 | 3.5 | 6 | 13 | 40 | 10 | 4.5 | 8 | 70.5 | 65 |
| | 1 | 1/2 | 35--50 | 290 | 320 | 350 | 458 | 15 | 4.5 | 6 | 15 | 50 | 12 | 5.5 | 10 | 85.5 | 80 |
| | 2 | 1 | 40--55 | 340 | 375 | 410 | 504 | 17 | 4.5 | 6 | 18 | 55 | 15 | 6.5 | 12 | 95.5 | 90 |
| | 3 | 2 | 45--65 | 380 | 420 | 460 | 540 | 18 | 4.5 | 6 | 18 | 65 | 18 | 6.5 | 12 | 105.5 | 100 |
| | 5 | 3 | 50--75 | 430 | 470 | 510 | 604 | 20 | 4.5 | 6 | 21 | 75 | 20 | 7 | 13 | 120.5 | 115 |
| 1/900 | 7-1/2 | 5 | 55--90 | 480 | 520 | 560 | 684 | 20 | 4.5 | 6 | 21 | 90 | 24 | 8.5 | 16 | 145.5 | 140 |
| | 10 | 7-1/2 | 65-100 | 530 | 580 | 630 | 765 | 22 | 4.5 | 6 | 24 | 100 | 28 | 8.5 | 16 | 170.5 | 165 |
| 1/901 | 1/4-1/2 | 1/4 | 25--45 | 260 | 290 | 320 | 405 | 15 | 3.5 | 6 | 15 | 45 | 12 | 5.5 | 10 | 75.5 | 70 |
| | 1 | 1/2 | 35--50 | 290 | 320 | 350 | 481 | 15 | 4.5 | 6 | 15 | 50 | 12 | 5.5 | 10 | 85.5 | 80 |
| | 2 | 1 | 40--55 | 340 | 375 | 410 | 523 | 17 | 4.5 | 6 | 18 | 55 | 15 | 6.5 | 12 | 95.5 | 90 |
| | 3 | 2 | 45--65 | 380 | 420 | 460 | 565.5 | 18 | 4.5 | 6 | 18 | 65 | 18 | 6.5 | 12 | 105.5 | 100 |
| 1/1800 | 5 | 3 | 50--75 | 430 | 470 | 510 | 630 | 20 | 4.5 | 6 | 21 | 75 | 20 | 7 | 13 | 120.5 | 115 |
| | 7-1/2 | 5 | 55--90 | 480 | 520 | 560 | 704 | 20 | 4.5 | 6 | 21 | 90 | 24 | 8.5 | 16 | 145.5 | 140 |
| | 10 | 7-1/2 | 65-100 | 530 | 580 | 630 | 790 | 22 | 4.5 | 6 | 24 | 100 | 28 | 8.5 | 16 | 170.5 | 165 |

SHW型雙軸式齒輪馬達減速機

SHW TYPE GEAR MOTOR SPEED REDUCER



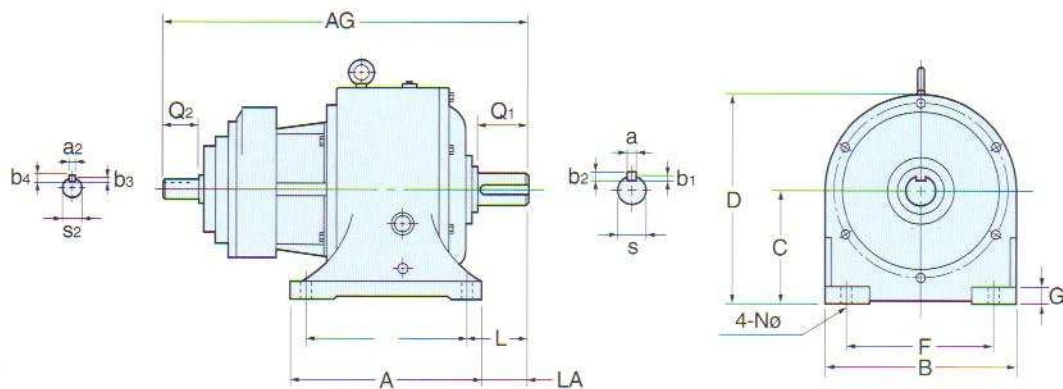
尺寸表 (MEASUREMENTS):

單位(Unit):m/m

| 減速比 Reducing Ratio | 馬力 HP | | 型號 Mode SHW | A | AG | B | C | D | L | E | G | F | LA | N | 出力軸端 OUTPUT SHAFT END | | | | | 入力軸端 INPUT SHAFT END | | | | |
|--------------------------|----------|-------|-------------------|-----|-------|-----|-----|-----|-----|-----|-----|-----|-----|-----|--------------------------|-----|-----|-----|-----|-------------------------|-----|-----|----|----|
| | 4P | 6P | | | | | | | | | | | | | Q1 | a1 | b1 | b2 | S1 | Q2 | a2 | b3 | b4 | S2 |
| 1/4 | 1/4 | | 25 | 195 | 260 | 205 | 110 | 200 | 62 | 155 | 20 | 150 | 40 | 11 | 45 | 7 | 4 | 7 | 25 | 30 | 5 | 3 | 5 | 14 |
| | 1/2 | 1/4 | 25 | 195 | 260 | 205 | 110 | 200 | 62 | 155 | 20 | 150 | 40 | 11 | 45 | 7 | 4 | 7 | 25 | 30 | 5 | 3 | 5 | 14 |
| | 1 | 1/2 | 30 | 240 | 331.5 | 233 | 120 | 225 | 60 | 200 | 25 | 170 | 40 | 11 | 55 | 7 | 4 | 7 | 30 | 40 | 5 | 3 | 5 | 19 |
| | 2 | 1 | 35 | 240 | 336.5 | 233 | 120 | 225 | 65 | 200 | 25 | 170 | 45 | 13 | 60 | 10 | 4.5 | 8 | 35 | 40 | 5 | 3 | 5 | 19 |
| | 3 | 2 | 40 | 260 | 371 | 265 | 135 | 255 | 70 | 230 | 27 | 190 | 50 | 13 | 65 | 10 | 4.5 | 8 | 40 | 50 | 8 | 4 | 7 | 24 |
| | 5 | 3 | 45 | 284 | 387 | 295 | 155 | 290 | 75 | 240 | 28 | 220 | 50 | 15 | 70 | 12 | 5.5 | 10 | 45 | 50 | 8 | 4 | 7 | 24 |
| 1/20 | 7-1/2 | 5 | 50 | 312 | 439 | 340 | 175 | 330 | 80 | 270 | 30 | 270 | 60 | 15 | 80 | 12 | 5.5 | 10 | 50 | 60 | 8 | 4 | 7 | 28 |
| | 10 | 7-1/2 | 55 | 360 | 474 | 390 | 205 | 380 | 106 | 300 | 32 | 310 | 78 | 18 | 90 | 15 | 6.5 | 12 | 55 | 60 | 10 | 4.5 | 8 | 32 |
| | 15 | 10 | 65 | 395 | 508.5 | 425 | 240 | 435 | 103 | 340 | 35 | 330 | 80 | 18 | 100 | 18 | 6.5 | 12 | 65 | 60 | 10 | 4.5 | 8 | 32 |
| | 20 | 15 | 75 | 445 | 561 | 480 | 265 | 485 | 112 | 380 | 38 | 370 | 80 | 21 | 115 | 20 | 7 | 13 | 75 | 80 | 12 | 5.5 | 10 | 42 |
| 1/21 | 30 | 20 | 90 | 495 | 631 | 530 | 295 | 540 | 148 | 430 | 40 | 420 | 120 | 21 | 140 | 24 | 8.5 | 16 | 90 | 80 | 12 | 5.5 | 10 | 42 |
| | 40 | 30 | 100 | 540 | 715 | 600 | 340 | 610 | 222 | 470 | 43 | 480 | 187 | 24 | 165 | 28 | 8.5 | 16 | 100 | 100 | 12 | 5.5 | 10 | 48 |
| | 1/4 | | 25 | 195 | 260 | 205 | 110 | 200 | 62 | 155 | 20 | 150 | 40 | 11 | 45 | 7 | 4 | 7 | 25 | 30 | 5 | 3 | 5 | 14 |
| | 1/2 | 1/4 | 25 | 195 | 260 | 205 | 110 | 200 | 62 | 155 | 20 | 150 | 40 | 11 | 45 | 7 | 4 | 7 | 25 | 30 | 5 | 3 | 5 | 14 |
| 1/30 | 1 | 1/2 | 35 | 240 | 336.5 | 233 | 120 | 225 | 65 | 200 | 25 | 170 | 45 | 13 | 60 | 10 | 4.5 | 8 | 35 | 40 | 5 | 3 | 5 | 19 |
| | 2 | 1 | 40 | 260 | 371 | 265 | 135 | 255 | 71 | 230 | 27 | 190 | 50 | 13 | 65 | 10 | 4.5 | 8 | 40 | 50 | 8 | 4 | 7 | 24 |
| | 3 | 2 | 45 | 290 | 387 | 295 | 155 | 290 | 75 | 240 | 28 | 220 | 50 | 15 | 70 | 12 | 5.5 | 10 | 45 | 50 | 8 | 4 | 7 | 24 |
| | 5 | 3 | 50 | 312 | 439 | 340 | 175 | 330 | 80 | 270 | 30 | 270 | 60 | 15 | 80 | 12 | 5.5 | 10 | 50 | 60 | 8 | 4 | 7 | 28 |
| | 7-1/2 | 5 | 55 | 360 | 474 | 390 | 205 | 380 | 106 | 300 | 32 | 310 | 78 | 18 | 90 | 15 | 6.5 | 12 | 55 | 60 | 10 | 4.5 | 8 | 32 |
| | 10 | 7-1/2 | 65 | 395 | 508.5 | 425 | 240 | 435 | 103 | 340 | 35 | 330 | 80 | 18 | 100 | 18 | 6.5 | 12 | 65 | 60 | 10 | 4.5 | 8 | 32 |
| 1/31 | 15 | 10 | 75 | 445 | 561 | 480 | 265 | 485 | 112 | 380 | 38 | 370 | 80 | 21 | 115 | 20 | 7 | 13 | 75 | 80 | 12 | 5.5 | 10 | 42 |
| | 20 | 15 | 90 | 495 | 631 | 530 | 295 | 540 | 148 | 430 | 40 | 420 | 120 | 21 | 140 | 24 | 8.5 | 16 | 90 | 80 | 12 | 5.5 | 10 | 42 |
| | 30 | 20 | 100 | 540 | 715 | 600 | 340 | 610 | 222 | 470 | 43 | 480 | 187 | 24 | 165 | 28 | 8.5 | 16 | 100 | 100 | 12 | 5.5 | 10 | 48 |
| | 1/4 | | 25 | 203 | 276 | 200 | 110 | 200 | 62 | 155 | 20 | 150 | 40 | 11 | 45 | 7 | 4 | 7 | 25 | 30 | 5 | 3 | 5 | 14 |
| | 1/2 | 1/4 | 25 | 203 | 276 | 200 | 110 | 200 | 62 | 155 | 20 | 150 | 40 | 11 | 45 | 7 | 4 | 7 | 25 | 30 | 5 | 3 | 5 | 14 |
| | 1 | 1/2 | 35 | 255 | 359.5 | 230 | 120 | 225 | 65 | 200 | 25 | 170 | 45 | 13 | 60 | 10 | 4.5 | 8 | 35 | 40 | 5 | 3 | 5 | 19 |
| 1/60 | 2 | 1 | 40 | 273 | 390 | 265 | 135 | 255 | 73 | 230 | 27 | 190 | 50 | 13 | 65 | 10 | 4.5 | 8 | 40 | 50 | 8 | 4 | 7 | 24 |
| | 3 | 2 | 45 | 290 | 413 | 295 | 155 | 290 | 75 | 240 | 28 | 220 | 50 | 15 | 70 | 12 | 5.5 | 10 | 45 | 50 | 8 | 4 | 7 | 24 |
| | 5 | 3 | 50 | 333 | 464 | 340 | 175 | 330 | 91 | 270 | 30 | 270 | 60 | 15 | 80 | 12 | 5.5 | 10 | 50 | 60 | 8 | 4 | 7 | 28 |
| | 7-1/2 | 5 | 55 | 364 | 495 | 390 | 205 | 389 | 95 | 300 | 32 | 310 | 74 | 18 | 90 | 15 | 6.5 | 12 | 55 | 60 | 10 | 4.5 | 8 | 32 |
| | 10 | 7-1/2 | 65 | 395 | 554.5 | 425 | 240 | 435 | 113 | 340 | 35 | 330 | 80 | 18 | 100 | 18 | 6.5 | 12 | 65 | 60 | 10 | 4.5 | 8 | 32 |
| | 15 | 10 | 75 | 445 | 594 | 480 | 265 | 485 | 112 | 380 | 38 | 370 | 80 | 21 | 115 | 20 | 7 | 13 | 75 | 80 | 12 | 5.5 | 10 | 42 |
| 1/61 | 20 | 15 | 90 | 495 | 671 | 535 | 295 | 540 | 148 | 430 | 40 | 420 | 120 | 21 | 140 | 24 | 8.5 | 16 | 90 | 80 | 12 | 5.5 | 10 | 42 |
| | 30 | 20 | 100 | 540 | 750 | 600 | 340 | 610 | 222 | 470 | 43 | 480 | 187 | 24 | 165 | 28 | 8.5 | 16 | 100 | 100 | 12 | 5.5 | 10 | 48 |
| | 1/4 | | 25 | 203 | 276 | 200 | 110 | 200 | 62 | 155 | 20 | 150 | 40 | 11 | 45 | 7 | 4 | 7 | 25 | 30 | 5 | 3 | 5 | 14 |
| | 1/2 | 1/4 | 35 | 258 | 359.5 | 230 | 120 | 225 | 65 | 200 | 25 | 170 | 45 | 13 | 60 | 10 | 4.5 | 8 | 35 | 40 | 5 | 3 | 5 | 19 |
| | 1 | 1/2 | 40 | 273 | 390 | 265 | 135 | 255 | 71 | 230 | 27 | 190 | 50 | 13 | 65 | 10 | 4.5 | 8 | 40 | 50 | 8 | 4 | 7 | 24 |
| | 2 | 1 | 45 | 290 | 413 | 295 | 155 | 290 | 75 | 240 | 28 | 220 | 50 | 15 | 70 | 12 | 5.5 | 10 | 45 | 50 | 8 | 4 | 7 | 24 |
| 1/120 | 3 | 2 | 50 | 333 | 464 | 340 | 175 | 330 | 91 | 270 | 30 | 270 | 60 | 15 | 80 | 12 | 5.5 | 10 | 50 | 60 | 8 | 4 | 7 | 28 |
| | 5 | 3 | 55 | 360 | 495 | 390 | 205 | 389 | 95 | 300 | 32 | 310 | 78 | 18 | 90 | 15 | 6.5 | 12 | 55 | 60 | 10 | 4.5 | 8 | 32 |
| | 7-1/2 | 5 | 65 | 395 | 554.5 | 425 | 240 | 435 | 113 | 340 | 35 | 330 | 80 | 18 | 100 | 18 | 6.5 | 12 | 65 | 60 | 10 | 4.5 | 8 | 32 |
| | 10 | 7-1/2 | 75 | 445 | 594 | 480 | 265 | 485 | 112 | 380 | 38 | 370 | 80 | 21 | 115 | 20 | 7 | 13 | 75 | 80 | 12 | 5.5 | 10 | 42 |
| 15 | 10 | 90 | 495 | 671 | 535 | 295 | 540 | 148 | 430 | 40 | 420 | 120 | 21 | 140 | 24 | 8.5 | 16 | 90 | 80 | 12 | 5.5 | 10 | 42 | |
| 20 | 15 | 100 | 540 | 750 | 600 | 340 | 610 | 222 | 470 | 43 | 480 | 187 | 24 | 165 | 28 | 8.5 | 16 | 100 | 100 | 12 | 5.5 | 10 | 48 | |

SHVW型雙軸式齒輪馬達減速機

SHVW TYPE GEAR MOTOR SPEED REDUCER



尺寸表 (MEASUREMENTS):

單位(Unit):m/m

| 減速比 Reducing Ratio | 馬力 HP | | 型號 Mode SHVW | A | AG | B | C | D | L | E | G | F | LA | N | 出力軸端 OUTPUT SHAFT END | | | | | 入力軸端 INPUT SHAFT END | | | | |
|--------------------------|----------|-------|--------------------|-----|-------|-----|-----|-----|-----|-----|----|-----|-----|----|--------------------------|----|-----|----|-----|-------------------------|----|-----|---|----|
| | 4P | 6P | | Q1 | a1 | b1 | b2 | S1 | Q2 | a2 | b3 | b4 | S2 | | | | | | | | | | | |
| | | | | | | | | | | | | | | | | | | | | | | | | |
| 1/121 | 1/4-1/2 | 1/4 | 25--40 | 260 | 464 | 265 | 135 | 255 | 71 | 230 | 27 | 190 | 50 | 13 | 65 | 10 | 4.5 | 8 | 40 | 30 | 5 | 3 | 5 | 14 |
| | 1 | 1/2 | 30--45 | 290 | 537.5 | 295 | 155 | 290 | 75 | 240 | 28 | 220 | 50 | 15 | 70 | 12 | 5.5 | 10 | 45 | 40 | 5 | 3 | 5 | 19 |
| | 2 | 1 | 35--50 | 312 | 574.5 | 340 | 175 | 330 | 80 | 270 | 30 | 270 | 60 | 15 | 80 | 12 | 5.5 | 10 | 50 | 40 | 5 | 3 | 5 | 19 |
| | 3 | 2 | 40--55 | 360 | 635 | 390 | 205 | 380 | 106 | 300 | 32 | 310 | 78 | 18 | 90 | 15 | 6.5 | 12 | 55 | 50 | 8 | 4 | 7 | 24 |
| | 5 | 3 | 45--65 | 395 | 668 | 425 | 240 | 435 | 113 | 340 | 35 | 330 | 80 | 18 | 100 | 18 | 6.5 | 12 | 65 | 50 | 8 | 4 | 7 | 24 |
| | 7-1/2 | 5 | 50--75 | 445 | 729 | 480 | 265 | 485 | 112 | 380 | 38 | 370 | 80 | 21 | 115 | 20 | 7 | 13 | 75 | 60 | 8 | 4 | 7 | 28 |
| 1/400 | 10 | 7-1/2 | 55--90 | 495 | 808 | 530 | 295 | 540 | 148 | 430 | 40 | 420 | 120 | 21 | 140 | 24 | 8.5 | 16 | 90 | 60 | 10 | 4.5 | 8 | 32 |
| | 15 | 10 | 65-100 | 540 | 940.5 | 600 | 340 | 610 | 222 | 470 | 43 | 480 | 187 | 24 | 165 | 28 | 8.5 | 16 | 100 | 60 | 10 | 4.5 | 8 | 32 |
| | 1/4-1/2 | 1/4 | 25--40 | 260 | 464 | 265 | 135 | 255 | 71 | 230 | 27 | 190 | 50 | 13 | 65 | 10 | 4.5 | 8 | 40 | 30 | 5 | 3 | 5 | 14 |
| 1/401 | 1 | 1/2 | 35--50 | 312 | 596.5 | 340 | 175 | 330 | 80 | 270 | 30 | 270 | 60 | 15 | 80 | 12 | 5.5 | 10 | 50 | 40 | 5 | 3 | 5 | 19 |
| | 2 | 1 | 40--55 | 360 | 635 | 390 | 205 | 380 | 106 | 300 | 32 | 310 | 78 | 18 | 90 | 15 | 6.5 | 12 | 55 | 50 | 8 | 4 | 7 | 24 |
| | 3 | 2 | 45--65 | 395 | 668 | 425 | 240 | 435 | 113 | 340 | 35 | 330 | 80 | 18 | 100 | 18 | 6.5 | 12 | 65 | 50 | 8 | 4 | 7 | 24 |
| | 5 | 3 | 50--75 | 445 | 729 | 480 | 265 | 485 | 112 | 380 | 38 | 370 | 80 | 21 | 115 | 20 | 7 | 13 | 75 | 60 | 8 | 4 | 7 | 28 |
| 1/900 | 7-1/2 | 5 | 55--90 | 495 | 808 | 530 | 295 | 540 | 148 | 430 | 40 | 420 | 120 | 21 | 140 | 24 | 8.5 | 16 | 90 | 60 | 10 | 4.5 | 8 | 32 |
| | 10 | 7-1/2 | 65-100 | 540 | 940.5 | 600 | 340 | 610 | 222 | 470 | 43 | 480 | 187 | 24 | 165 | 28 | 8.5 | 16 | 100 | 60 | 10 | 4.5 | 8 | 32 |
| 1/901 | 1/4-1/2 | 1/4 | 25--45 | 290 | 495 | 295 | 155 | 290 | 75 | 240 | 28 | 220 | 50 | 15 | 70 | 12 | 5.5 | 10 | 45 | 30 | 5 | 3 | 5 | 14 |
| | 1 | 1/2 | 35--50 | 312 | 596.5 | 340 | 175 | 330 | 80 | 270 | 30 | 270 | 60 | 15 | 80 | 12 | 5.5 | 10 | 50 | 40 | 5 | 3 | 5 | 19 |
| | 2 | 1 | 40--55 | 360 | 654 | 390 | 205 | 380 | 106 | 300 | 32 | 310 | 78 | 18 | 90 | 15 | 6.5 | 12 | 55 | 50 | 8 | 4 | 7 | 24 |
| | 3 | 2 | 45--65 | 395 | 693.5 | 425 | 240 | 435 | 113 | 340 | 35 | 330 | 80 | 18 | 100 | 18 | 6.5 | 12 | 65 | 50 | 8 | 4 | 7 | 24 |
| | 5 | 3 | 50--75 | 445 | 755 | 480 | 265 | 485 | 112 | 380 | 38 | 370 | 80 | 21 | 115 | 20 | 7 | 13 | 75 | 60 | 8 | 4 | 7 | 28 |
| | 7-1/2 | 5 | 55--90 | 495 | 828 | 530 | 295 | 540 | 148 | 430 | 40 | 420 | 120 | 21 | 140 | 24 | 8.5 | 16 | 90 | 60 | 10 | 4.5 | 8 | 32 |
| 1/1800 | 10 | 7-1/2 | 65-100 | 540 | 965.5 | 600 | 340 | 610 | 222 | 470 | 43 | 480 | 187 | 24 | 165 | 28 | 8.5 | 16 | 100 | 60 | 10 | 4.5 | 8 | 32 |



齒輪馬達減速機

REDUCED SPEED MOTOR SPEED REDUCER
MOTOR SPEED REDUCER



孟厚企業有限公司 根厚企業有限公司

總代理

日本TSUBAKI精機產品
日本YASKAWA伺服馬達
日本SHIMPO變速機
日本住友CYCLO減速機
日本富士、日立鼓風機
東力小型減變速機

成大渦輪齒輪減速機
統信SCR扭力限制器
北譯變速機、剎車器
富士HITECH人機介面
T.Y.C 鏈條·力揚PLC
各廠牌變頻器、DC馬達、泵浦

高雄(07) 7223282 台南(06) 3313989 台中(04) 23220225