



YFC-BonEagle

6220

岳豐科技股份有限公司

YFC-BonEagle Electric Co. LTD.

www.cables.com.tw

Sep. 2022



Disclaimer 免責聲明

Disclaimer 免責聲明

The presentation contains projections & estimates of financial information as well as market and product developments for future periods.

These projections & estimates are based on information currently available which we believe to be reliable, but they involve risks & uncertainties.

Our actual results of operations & financial condition may differ significantly from those contained in projections & estimates.

The projections & estimates should not be interpreted as legally binding commitments, but rather as flexible information subject to change occasionally.

本次簡報中若包含有財務資訊的預測及未來市場及產品的趨勢。這些說明乃基於目前可以取得及目前相信是合理性的資料，但這些說明亦牽涉風險及不確定性。本公司之實際營運成果可能會與上述說明有不同的結果。簡報中屬預測性的資料並非本公司未來履行的保證，宜注意其隨時有變更的可能及風險。

簡報流程

- 集團簡介
- 未來高成長性產品
- 2022上半年經營狀況
- 未來展望

➤ 集團簡介

精 Excellence



技術專業; 產品精良
Professionalism of technology;
Excellent function of product.

新 Innovation



用新觀念; 創新產品
Innovation of creating product
with New ideas.

誠 Honesty

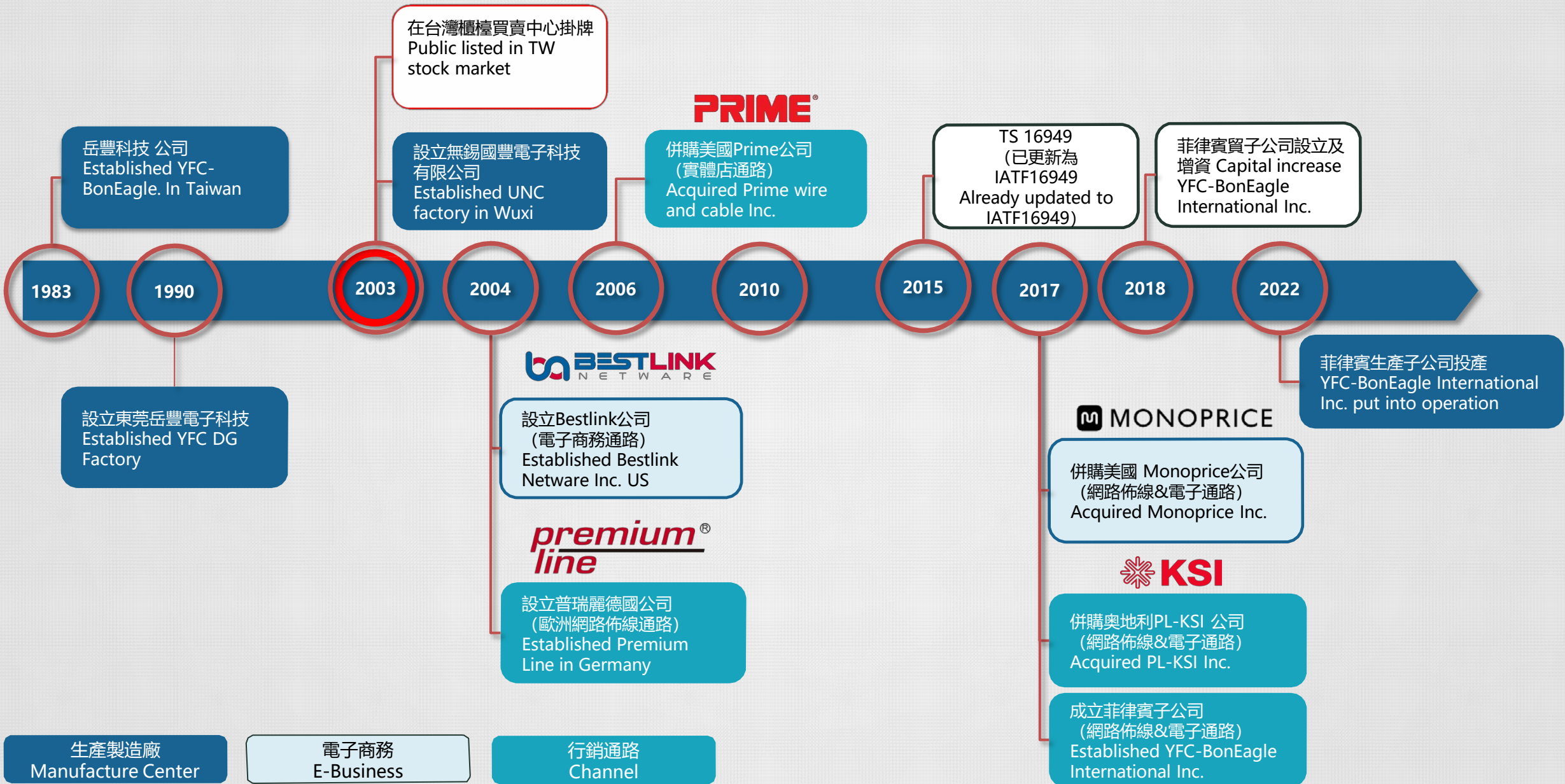


誠對同仁; 實待客戶
Honesty to employees; Honesty
to customer.

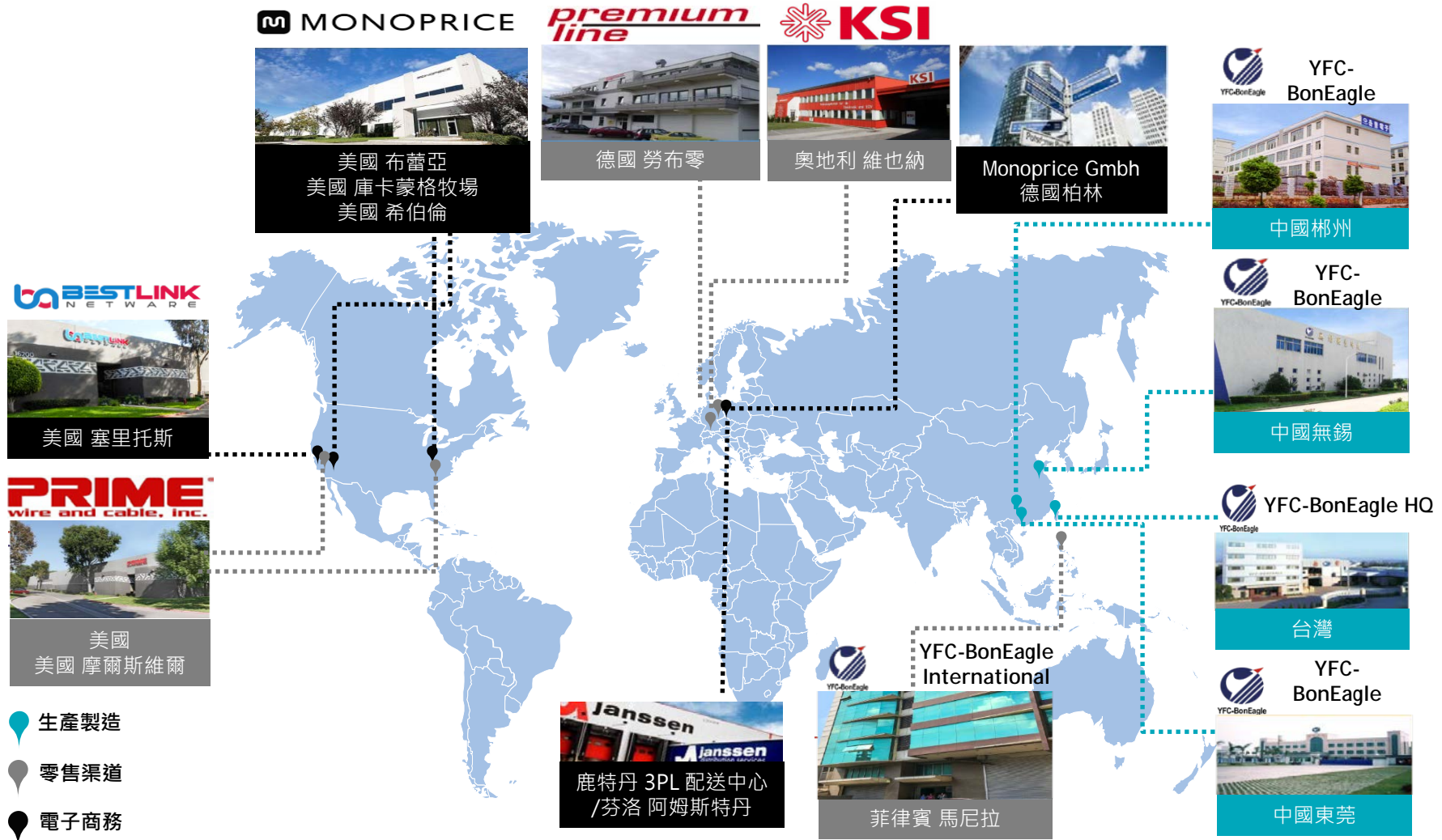
樸 Integrity



樸實經營; 努力不懈
Operating in austerity; Endlessly
endeavoring.



岳豐科技全球據點



Channel Partners

RETAILERS:



INDUSTRIAL:



DISTRIBUTION:



OEM:



岳豐主要經營事業

生產製造及批發
34%

事業單位：
岳豐科技

- 岳豐擁有台灣、東莞、無錫三地總生產空間超過150萬平方英尺的工廠。
- 增加租用菲律賓一廠及二廠,每月增加電源線材及電源插頭500萬米及網路跳線120萬條,估計營收分別為美金600萬元及120萬元。

電子商務及
B2B直接銷售
36%

事業單位：
Monoprice
Bestlink

Monoprice透過其電商平台銷售超過9,000件3C產品。

*B2B直接銷售：B2B線下銷售予中小企業、安裝廠商及大企業

B2B零售通路
30%

事業單位：
Prime
Monoprice

Prime是美國領先的延長線及電源插座之供應商，主要客戶為美國連鎖實體賣場,如LOWE'S、Costco等。

岳豐集團在美國東西兩岸總計擁有475,000平方英尺可擴展的電子商務倉儲及物流中心。

岳豐產品組合

岳豐科技

岳豐科技生產製造電源線、3C網路線及配件，除供應給Monoprice和Prime，也對外銷售。

電源線



3C網路線及配件



電動車傳輸線解決方案



高成長性產品

Monoprice

核心產品聚焦在自有品牌產品，主要客群為科技愛好者。

3C線及轉接器



專業音響設備



明日之星

Prime Wire and Cable

Prime是一個B2B販售品牌，販賣產品給實體零售商。

電源線



計時器及電線控制插座



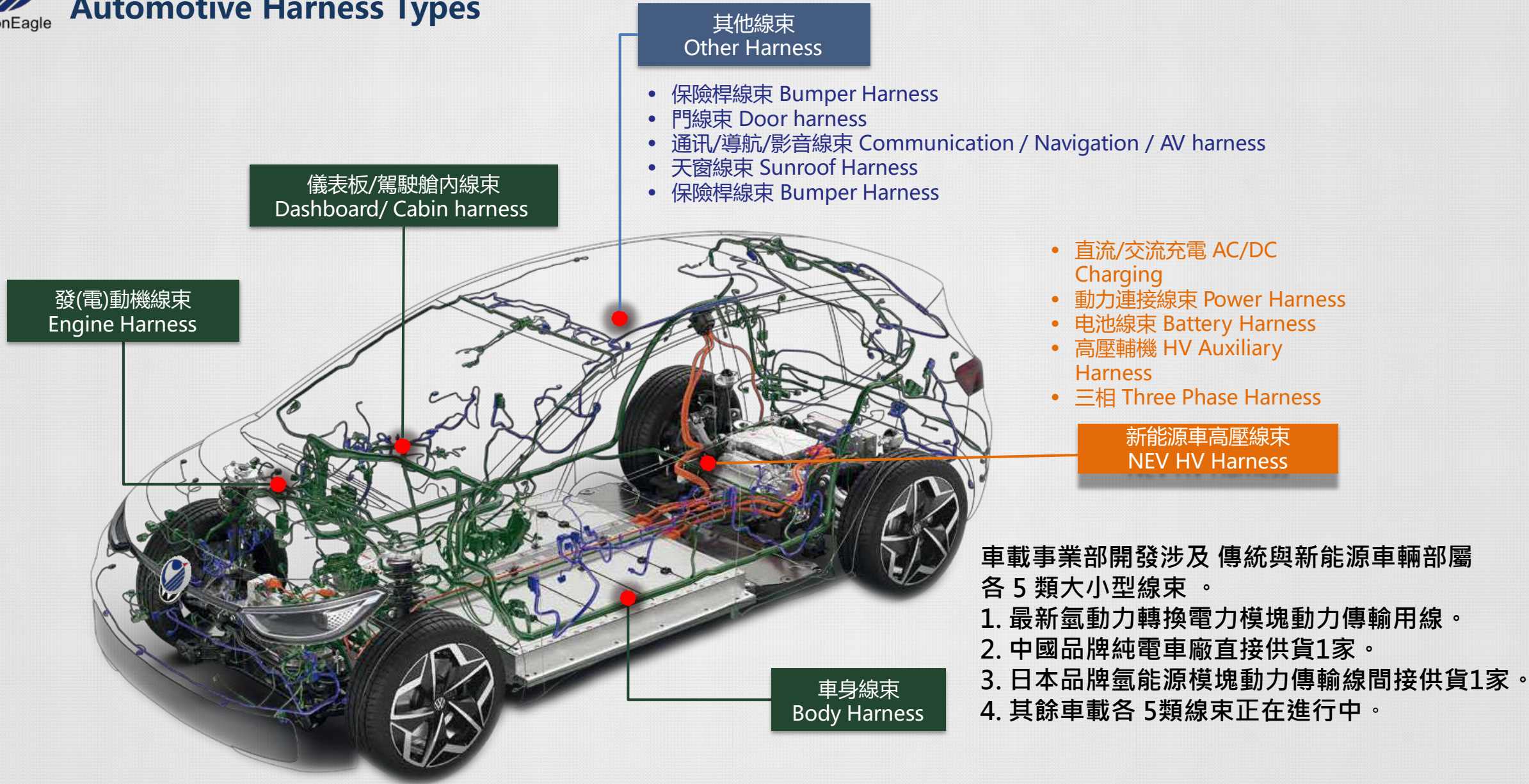
模塊化數據中心(MDC) Modular Data Center



明日之星

➤ **未來高成長性產品**

車載用線分類 Automotive Harness Types



車載事業部開發涉及 傳統與新能源車輛部屬各 5 類大小型線束。

1. 最新氫動力轉換電力模塊動力傳輸用線。
2. 中國品牌純電車廠直接供貨1家。
3. 日本品牌氫能源模塊動力傳輸線間接供貨1家。
4. 其餘車載各 5 類線束正在進行中。



低壓線束產品 Low Voltage Wire

純電動車電驅電控低壓線 Battery Electric Vehicle E-Drivetrain Low Voltage Wire





高壓線束產品
High Voltage Wire

氫動力轉換電力模塊動力傳輸用線
Hydrogen Fuel Cell Transmission Line



Modular Data Centers w/PLC Controlled Natural Air Cooling

for 5G Macro Sites & Enterprise Computing

模組化數據中心 搭載PLC自然冷卻降溫編程系統

適用於大型5G基地台及企業機房



YFC GROUP Networking Solutions

PATCH PANELS & CABLES

PRIME has patch cables in lengths from 1ft up to 100ft, made with the same superior quality as our bulk cable with solutions from Cat 5e through Cat 6A in up to 9 colors to match the bulk cabling leading into the data center servers, making it easier to identify which cables are for which portions of the network. All of PRIME's patch cables have heavy-duty strain reliefs to protect the internal connection to the jack from separating.

• Cat 5e • Cat 6 • Cat 6A • Cat 6A Slim

Available colors:



PRIME has Cat 5 & Cat 6 rated high density patch panels in 12 to 96 port models to help maximize the available rack space. With our exclusive NavILite® 24 port Patch Panels operators do not have to check complex schematics to find which connection is in which port in the panel, or if a patch cable is not properly connected. LED lights on the panel connect remotely to a signal transmitter to test each port in the panel and each wall jack on the other end of the connection, saving time and money during installation and maintenance.



LED Red light on:
Outlet connected to the network equipment



LED Green light on:
Outlet is not connected to the network equipment.



LED light off:
No connection between patch panel and outlet on pair 3-6.

DATA CENTERS & CABINETS

Modular Data Centers & Cabinets FOR 5G MACRO SITES & ENTERPRISE SOLUTIONS

FEATURING INTELLIGENT NATURAL AIR COOLING



Save Time & Money!
Low PUE <1.1
Lower Operating Cost

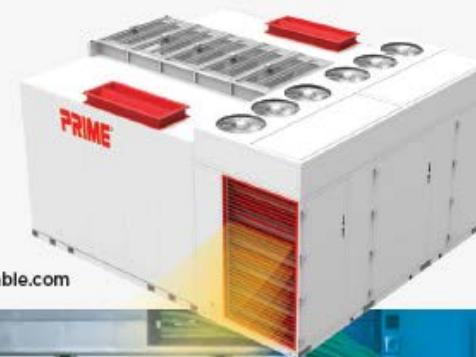


Rapid Deployment
Lower Installation Cost



Stable, Reliable & Scalable
Modular - Prefabricated & Pretested
Flexible - Indoor & Outdoor Use

For more information, please contact your PRIME Modular Data Center Specialist at: 909-718-5258 or datacenters@primewirecable.com



Data Cabinets

PRIME server cabinets meet the international standards ANSI/EIARS - 310 - C19. PRIME cabinets are made from high grade materials that can withstand an 800kg (1763lbs) static load. PRIME's wall mounted cabinets can withstand a maximum 60kg (132lbs) static load. Stocked in standard 90° 600 x 800 x 800 sizes, we can also accommodate custom size requirements. Ask your PRIME Data Cabinet Specialist for more information.



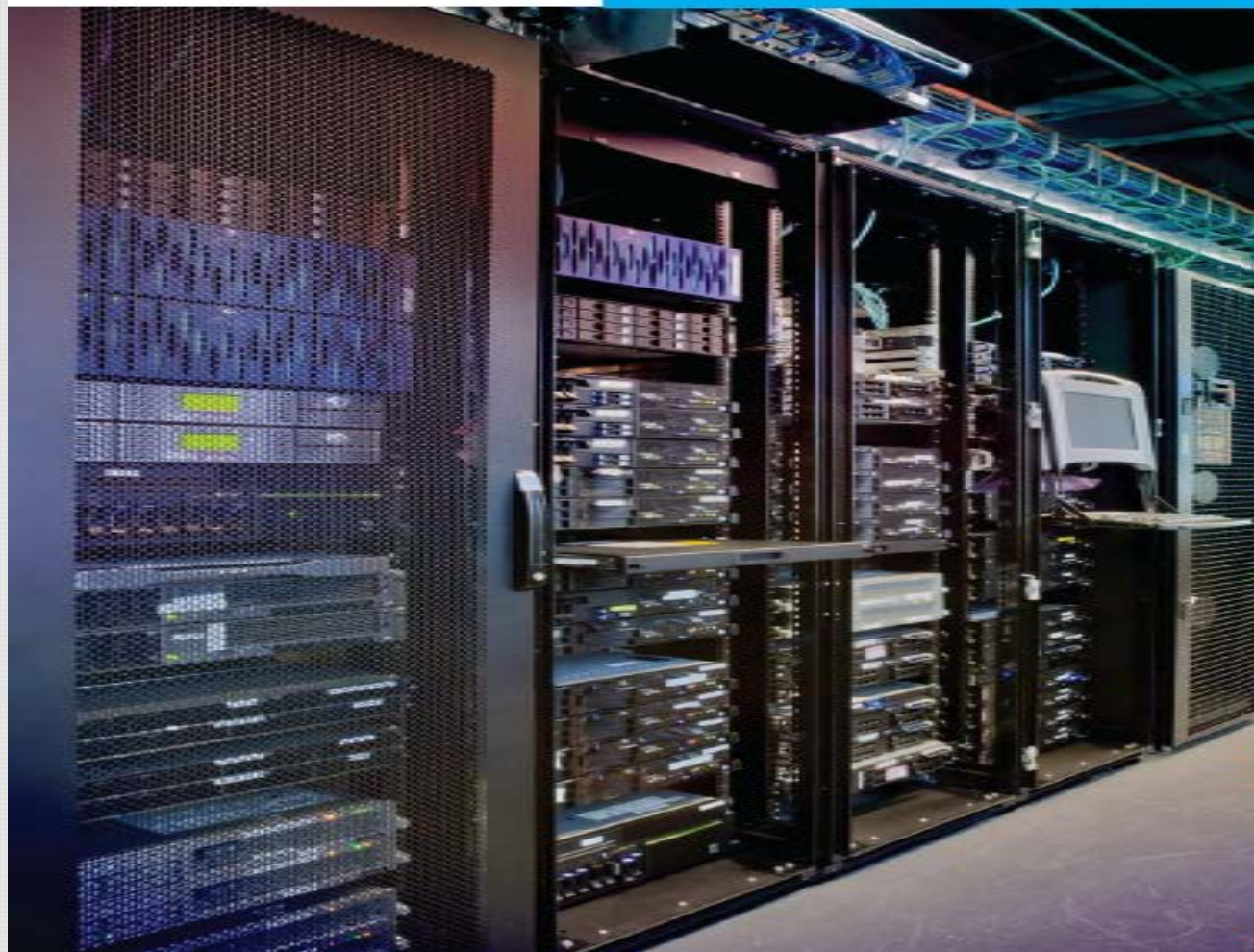
Wall Mount Cabinet

Network Server Cabinet



PRIME

STRUCTURED CABLING SYSTEMS



Fiber Optic Cables



Bulk Cable



Patch Cables & Panels



Data Cabinets



Modular Data Centers



YFC-BonEagle



US LISTED

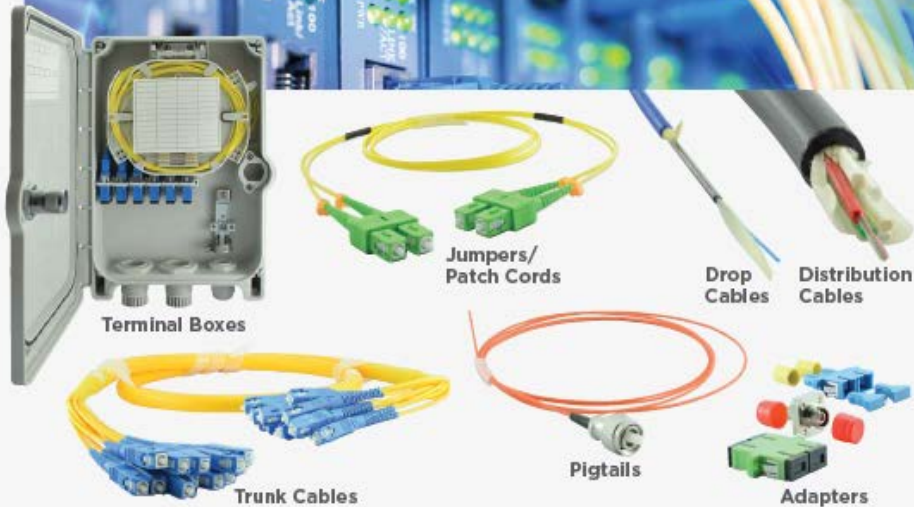


Society of Cable Telecommunications Engineers



FIBER OPTIC CABLES

PRIME supplies a full range of fiber optic cabling solutions from 62.5um – OM1, 50um – OM2, OM3 & OM4 with 125um refraction, engineered to effectively transmit at high speeds and longer distances to meet the demands of today's data and telecommunications networks. PRIME also has a complete range of patch cords, pigtails, adapters, terminal boxes and other accessories with low attenuation loss control.



909-718-5258 • datacenters@primewirecable.com • www.primewirecable.com

BULK CABLE

PRIME manufactures networking cables that meet the rigorous demands of both high-speed data transmission and smart home systems. From Cat 5e through Cat 6A, PRIME has UTP CMR, CMP, and outdoor/burial solutions for all your data-communication networking needs including for 10GBASE-T solutions over 100 meters and for frequencies up to 550MHz. All our cables meet the necessary ANSI, TIA, EIA, ISO/IEC and CENELEC EN standards.



Bulk Cabling Solutions

available in:

- Unshielded
- Shielded
- Riser PVC
- Plenum UTP
- Solid twisted pair
- Stranded

Type Bandwidth

Cat 6A	550Mhz
Cat 6	250Mhz
Cat 5e	100Mhz

Available in:



Available colors:



Prime Networking Solutions

ACCESSORIES

KEYSTONE JACKS, COUPLERS, PLUGS & BOOTS

Whether making custom-length patch cables or doing repairs to existing connections, PRIME has all the right components for both Cat 5e and Cat 6/6A solutions. Our Keystone Jacks utilize a toothless design for quick and accurate attachments. The termination caps provide excellent strain relief and all of the jacks are designed to exceed ANSI/TIA and ISO/IEC standards.



Face Plates

PRIME carries face plates for 1, 2, 3, 4 and 6 port applications (as well as a blank for a one-gang application) in both white and Ivory, matching the vast majority of decors. They are made from UL 94V-0 self-extinguishing, durable ABS plastic and can operate in temperatures from 14°F up to 140°F/-10°C up to 60°C.



Tools

In addition to an exclusive Keystone Jack tool, PRIME also has Crimping, Ratcheting, Punch Down and Compression Connector tools - virtually everything needed on the job for building or repairing patch cables.



Cable Management

When running cabling through ducts, organizing shelves or directing cables to the appropriate racks in a data center, PRIME has all of the most popular types of cable management solutions available.



909-718-5258 • datacenters@primewirecable.com • www.primewirecable.com

PRIME®

11-Outlet RACK MOUNT SURGE PROTECTOR w/SAFE-START TECHNOLOGY

MODEL: CPPDU511

PRIME's Rack-Mount Surge Protector is loaded with features, starting with 11 grounded outlets, 2160 Joules of surge protection and more! It's made for the rigorous demands of professional applications.



FEATURES

- Electrical Rating: 15A, 120V, 60Hz, 1800W
- UL Clamping Voltage: L-N 400V, L-G 400V, N-G 400V
- Surge Protection (2160J)
- LED Indicators for Surge Protection & Ground
- Lighted Power Status Rocker Switch (2-Pole)
- 15A Resettable Circuit Breaker for Overload Protection
- Built-in Retractable Hi-Lo LED Lights
- Retractable LED-Lighting Tubes
- Switch Activation Light
- "Always-On" (Unswitched) Outlets with Red LED Indicator
- Switched Outlets with Surge Protection
- Safe-Start Outlets (10 second delay)
- Rack-Mount Installation



Resettable
15A Circuit Breaker

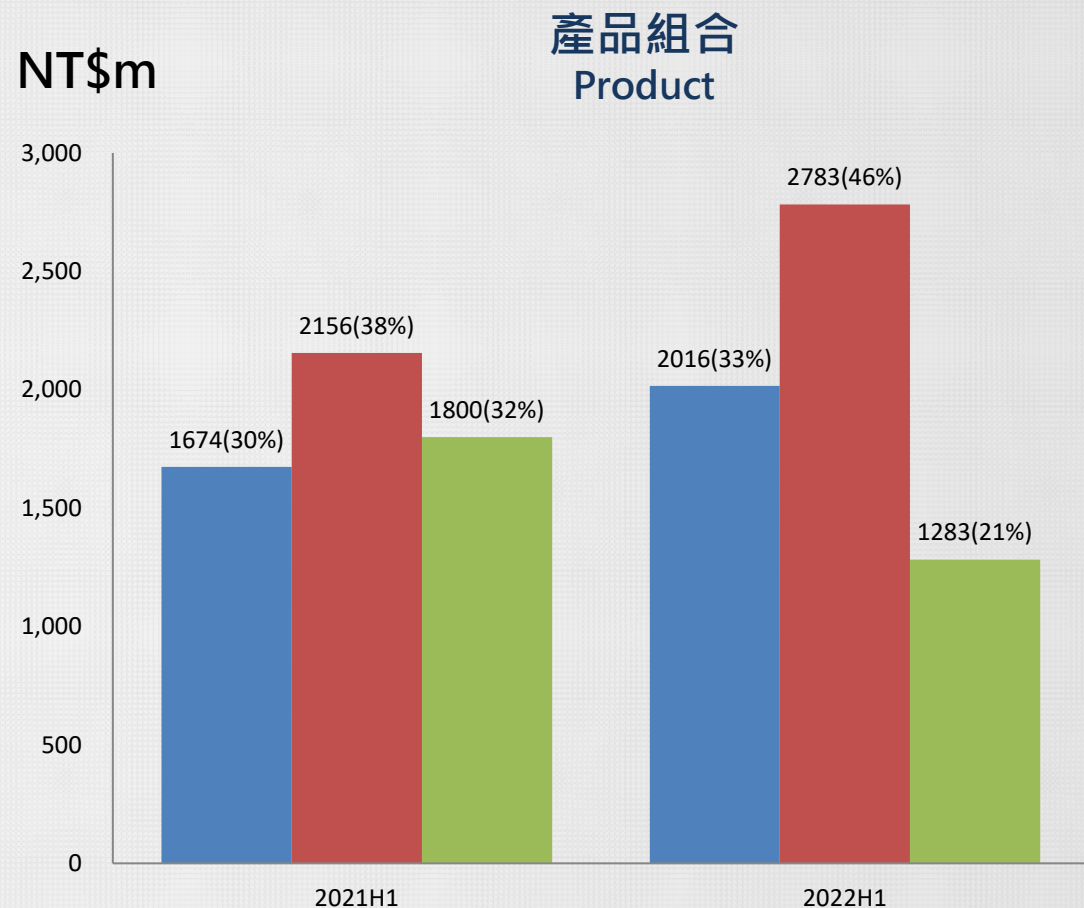
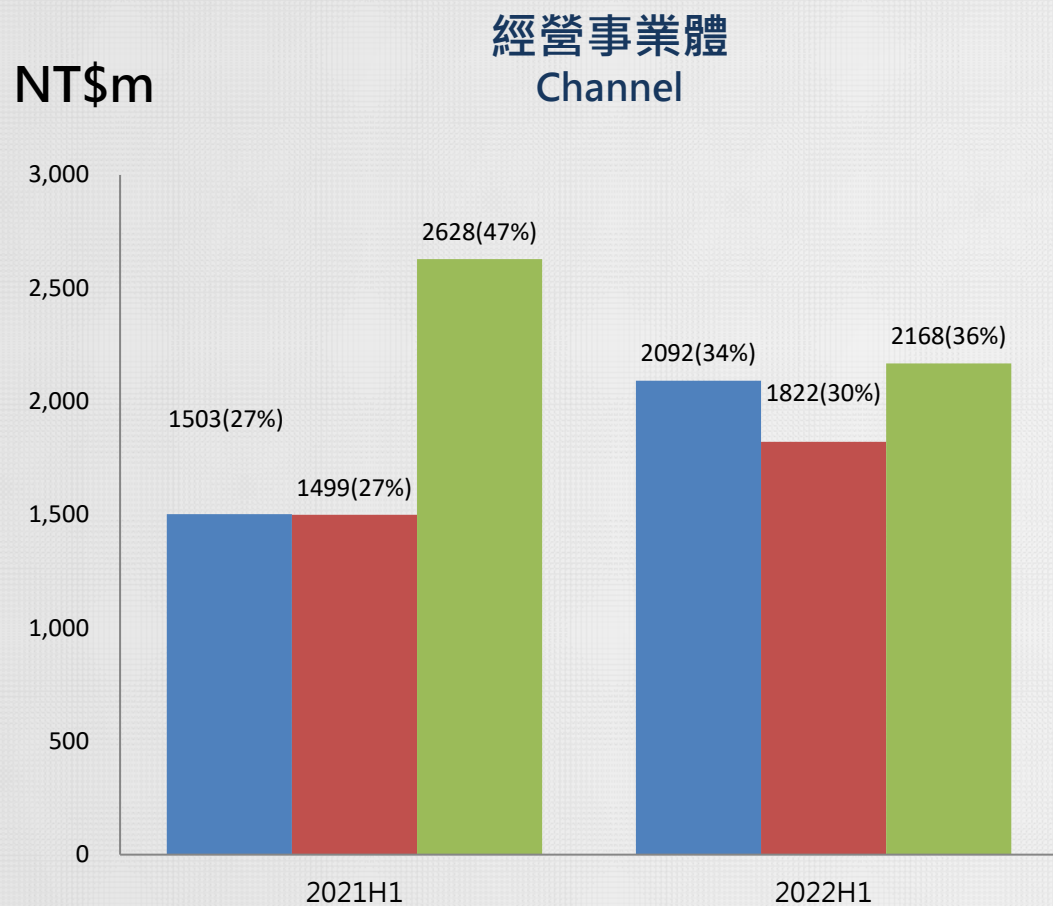




YFC-BonEagle

➤ 2022年上半年經營狀況

營業收入與去年上半年比較



■ Manufacture ■ Channel ■ E-commerce

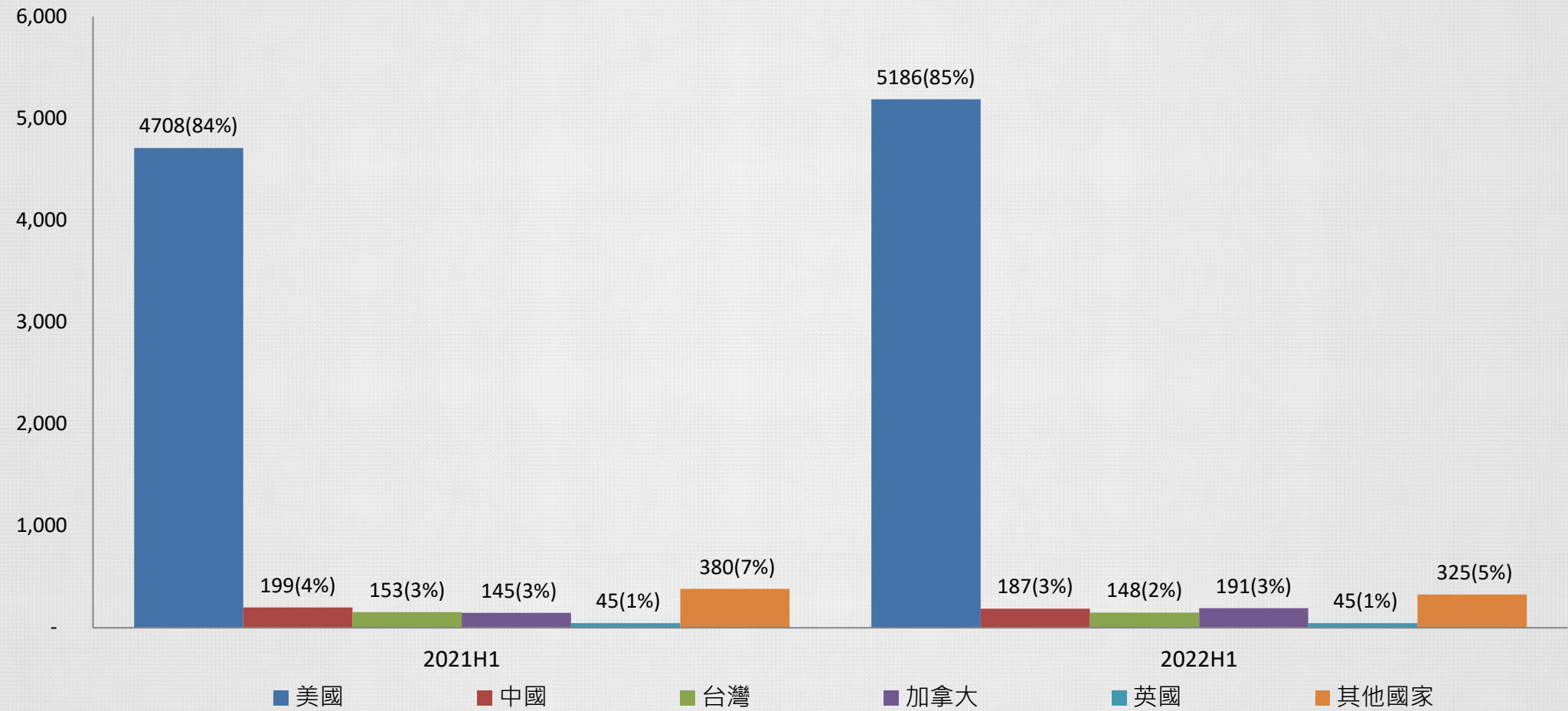
■ CABLE(網路線) ■ POWER CORD(電源線) ■ 其他(註)

2022年上半年NT\$60.82億 2021上半年NT\$56.3億

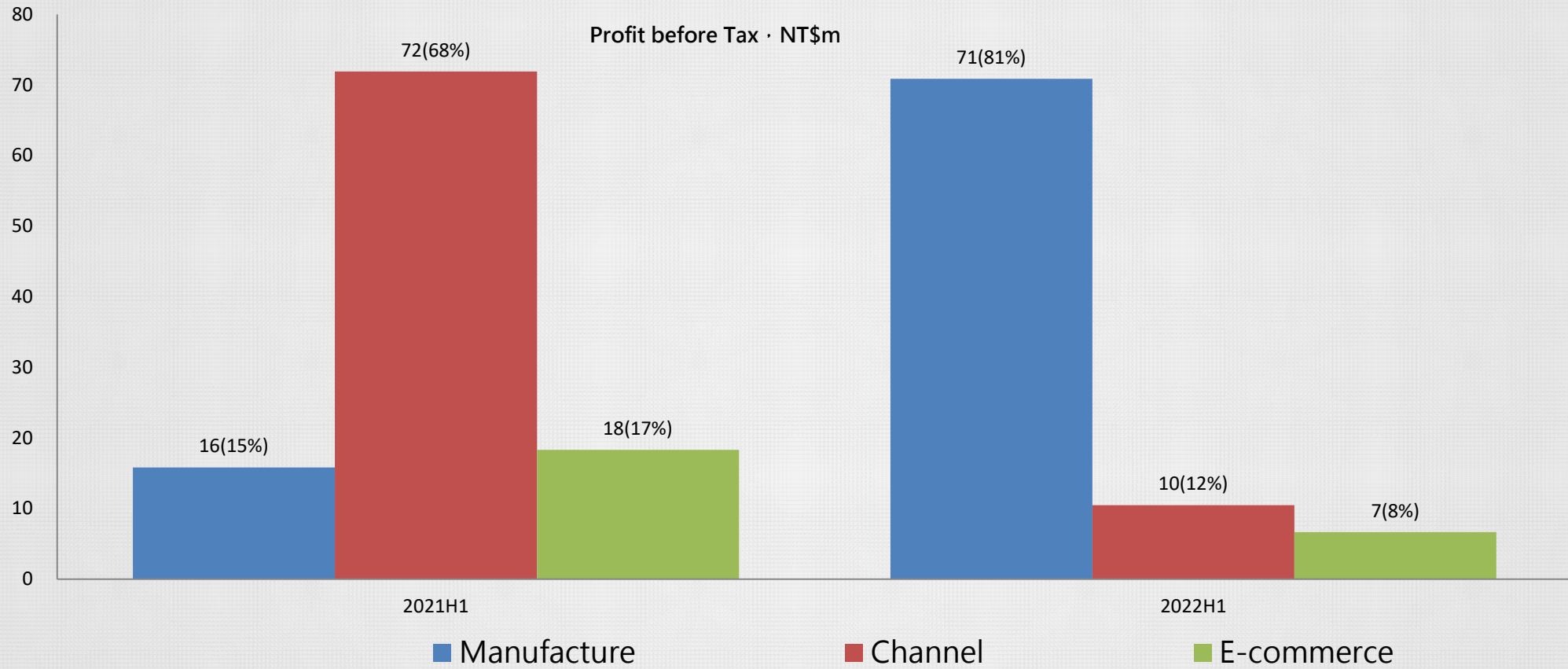
營業收入與去年上半年比較

NT\$m

銷售地區別 Area



稅前利益 Profit before Tax



NT\$m	2021H1	2022H1	2021H1	2022H1
Manufacture	16	71	15%	81%
Channel	72	10	68%	12%
E-commerce	18	7	17%	8%
Total	106	88	100%	100%



YFC-BonEagle

➤ 未來展望

➤ 未來展望

- ✓ 生產製造面
生產基地中國區東莞產能移轉至非中國區。
- ✓ 增加美國以外銷售地區別
開發中國大陸及日本車用市場
- ✓ 持續經營增加品牌權益

PRIME[®]

M MONOPRICE

premium[®]
line

BESTLINK
NETWARE

- ✓ 菲律賓廠已開始進行生產，可滿足客戶需有中國大陸地區以外生產據點要求；並可節省美國子公司PRIME、Monoprice、Bestlink目前需支付高進口關稅成本，增加美國市場競爭力及集團利潤。
- ✓ 岳豐在大中華地區擁有生產產能，隨著部份產能移往台灣及菲律賓，將開發中國大陸能源電動車用束線市場。
- ✓ 電源延長線相關產品在美國品牌設計、開發、製造能力，Prime品牌在美國有一定知名度。
- ✓ 集團於美國有四座倉儲，可降低客戶供貨斷鏈風險，故陸續增加知名新客戶。

感謝蒞臨！



官方網站：www.cables.com.tw

