

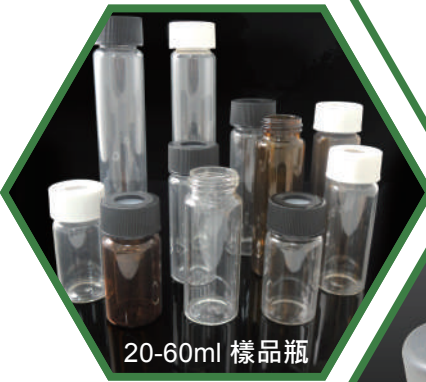


# 台灣鈺泰研究創新股份有限公司

Finetech Research And Innovation Corp.



- 色譜進樣瓶/蓋/墊設計研發生產
- 美國藥典第一級水解玻璃認證



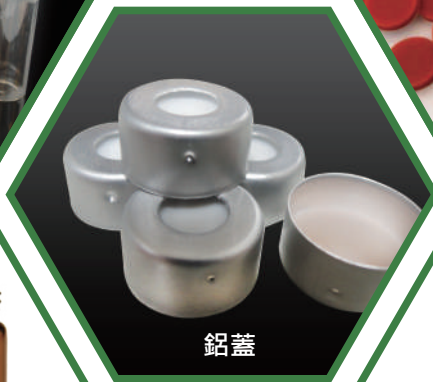
20-60ml 樣品瓶



頂空樣品瓶



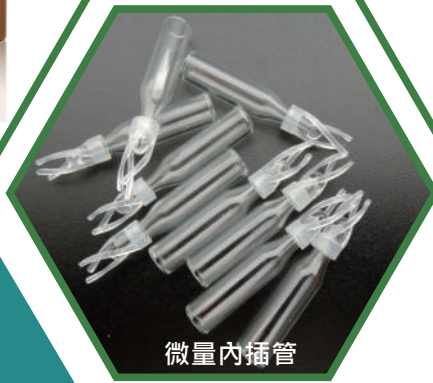
蓋墊



鋁蓋



2ml 樣品瓶



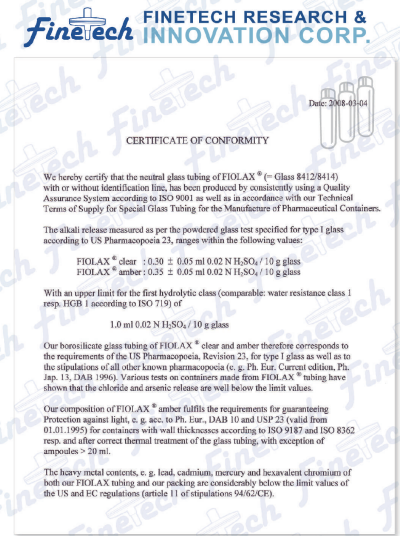
微量內插管



4ml 樣品瓶



NEW!!  
PTFE 預切/非預切矽膠蓋墊



ISO-9001&ISO-13485 Certificates



www.finetech-filter.com

# 證書

美國藥典第一級水解玻璃認證

**finetech** FINETECH RESEARCH & INNOVATION CORP.

Date: 2008-03-04



## CERTIFICATE OF CONFORMITY

We hereby certify that the neutral glass tubing of FIOLAX<sup>®</sup> (= Glass 8412/8414) with or without identification line, has been produced by consistently using a Quality Assurance System according to ISO 9001 as well as in accordance with our Technical Terms of Supply for Special Glass Tubing for the Manufacture of Pharmaceutical Containers.

The alkali release measured as per the powdered glass test specified for type I glass according to US Pharmacopoeia 23, ranges within the following values:

FIOLAX<sup>®</sup> clear :  $0.30 \pm 0.05$  ml 0.02 N H<sub>2</sub>SO<sub>4</sub> / 10 g glass

FIOLAX<sup>®</sup> amber :  $0.35 \pm 0.05$  ml 0.02 N H<sub>2</sub>SO<sub>4</sub> / 10 g glass

With an upper limit for the first hydrolytic class (comparable: water resistance class 1 resp. HGB 1 according to ISO 719) of

1.0 ml 0.02 N H<sub>2</sub>SO<sub>4</sub> / 10 g glass

Our borosilicate glass tubing of FIOLAX<sup>®</sup> clear and amber therefore corresponds to the requirements of the US Pharmacopoeia, Revision 23, for type I glass as well as to the stipulations of all other known pharmacopoeia (e. g. Ph. Eur. Current edition, Ph. Jap. 13, DAB 1996). Various tests on containers made from FIOLAX<sup>®</sup> tubing have shown that the chloride and arsenic release are well below the limit values.

Our composition of FIOLAX<sup>®</sup> amber fulfils the requirements for guaranteeing Protection against light, e. g. acc. to Ph. Eur., DAB 10 and USP 23 (valid from 01.01.1995) for containers with wall thicknesses according to ISO 9187 and ISO 8362 resp. and after correct thermal treatment of the glass tubing, with exception of ampoules > 20 ml.

The heavy metal contents, e. g. lead, cadmium, mercury and hexavalent chromium of both our FIOLAX tubing and our packing are considerably below the limit values of the US and EC regulations (article 11 of stipulations 94/62/CE).





# 儲存瓶: EPA/Storage/VOA Vial

## 2ML玻璃8mm樣品瓶、蓋墊

玻璃樣品瓶 報價表			20190503 ver. 10	製表人 Shelley
訂貨資訊			以上報價均未稅	
產品圖示	產品型號	中文說明	包裝	末端 (TW)
<b>玻璃8mm樣品瓶、蓋墊</b>				
	V8A	2ml透明螺紋樣品瓶 11.6×32mm	100pcs/盒	300
	V8B	2ml透明螺紋樣品瓶 帶書寫處 11.6×32mm	100pcs/盒	450
	V8C	2ml棕色螺旋口樣品瓶 11.6×32mm	100pcs/盒	460
	V8D	2ml棕色螺旋口樣品瓶 帶書寫處 11.6×32mm	100pcs/盒	480
	SC8A8A	白色PTFE/紅色白色Silicone隔墊, 8mm黑色開口PP螺旋蓋	100pcs/包	470
	SC8AA8A	預切口白色PTFE/紅色Silicone隔墊黑色開口PP螺旋蓋	100pcs/包	500
	SC8F8F	預切白色 PTFE / 紅色矽膠墊片, 8mm黑色螺紋PP蓋, 5.5mm中心孔	100pcs/包	470
	S8A	白色PTFE/紅色Silicone隔墊	100pcs/包	360
	S8AA	預切口白色PTFE/紅色Silicone隔墊	100pcs/包	450
	S8F	本色 PTFE / 白色矽膠墊片	100pcs/包	360



# 儲存瓶: EPA/Storage/VOA Vial

## 2ML玻璃9mm樣品瓶、蓋墊

玻璃樣品瓶 報價表			20190503 ver. 10	製表人 Shelley
訂貨資訊			以上報價均未稅	
產品圖示	產品型號	中文說明	包裝	末端 (TW)
<b>玻璃9mm樣品瓶、蓋墊</b>				
	V9A	2ml透明短螺紋廣口樣品瓶 11.6×32mm	100pcs/盒	300
	V9B	2ml透明短螺紋廣口樣品瓶 帶書寫處 11.6×32mm	100pcs/盒	450
	V9C	2ml棕色短螺紋廣口樣品瓶 11.6×32mm	100pcs/盒	460
	V9D	2ml棕色短螺紋廣口樣品瓶 帶書寫處 11.6×32mm	100pcs/盒	480
	SC9A9A	白色PTFE/紅色白色Silicone隔墊, 9mm藍色開口PP螺旋蓋	100pcs/包	450
	SC9F9F	本色PTFE/白色Silicone隔墊, 9mm藍色開口PP螺旋蓋	100pcs/包	480
	SC9B9A	紅色PTFE/白色Silicone隔墊 藍色短螺紋開口蓋	100pcs/包	480
	SC9AA9A	預切口白色PTFE/紅色Silicone隔墊 藍色短螺紋開口蓋	100pcs/包	500
	SC9FF9F	預切口本色PTFE/白色Silicone隔墊 藍色短螺紋開口蓋	100pcs/包	300
	S9A	白色PTFE/紅色Silicone隔墊	100pcs/包	340
	S9AA	預切口白色PTFE/紅色Silicone隔墊	100pcs/包	270
	S9F	本色PTFE/白色Silicone隔墊	100pcs/包	340
	9-SP2001-2GM	9-425螺紋帽磁性蓋墊	100pcs/包	1000



# 儲存瓶: EPA/Storage/VOA Vial

2ML玻璃鉗口瓶、蓋墊  
4ML玻璃樣品瓶、蓋墊

## 玻璃樣品瓶 報價表

20190503  
ver. 10

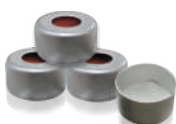
製表人  
Shelley

訂貨資訊		以上報價均未稅	
產品圖示	產品型號	中文說明	包裝 末端 (TW)
<b>玻璃2ML鉗口瓶、蓋墊</b>			
	V11A	透明鉗口樣品瓶 11.6x32mm	100pcs/盒 250
	V11B	透明鉗口樣品瓶 帶書寫處 11.6x32mm	100pcs/盒 450
	V11C	棕色鉗口樣品瓶 11.6x32mm	100pcs/盒 260
	V11D	棕色鉗口樣品瓶 帶書寫處 11.6x32mm	100pcs/盒 480
	SC11A11A	白色PTFE/紅色Silicone隔墊 11mm銀色開口鋁蓋	100pcs/包 490
	SC11F11F	本色PTFE/白色Silicone隔墊 11mm銀色開口鋁蓋	100pcs/包 480
	SC11AA11A	預切口白色PTFE/紅色Silicone隔墊 11mm銀色開口鋁蓋	100pcs/包 510
	<b>玻璃4ML樣品瓶、蓋墊</b>		
	V13A	透明螺口樣品瓶 15x45mm	100pcs/盒 430
	V13B	透明螺口樣品瓶 帶書寫處15x45mm	100pcs/盒 450
	V13C	棕色螺口樣品瓶 15x45mm	100pcs/盒 460
	V13D	棕色螺口樣品瓶 帶書寫處 15x45mm	100pcs/盒 480
	S13A	白色PTFE/紅色Silicone墊片	100pcs/包 590
	SC13A13A	白色PTFE/紅色Silicone隔墊, 13mm黑色開口聚丙烯蓋	100pcs/包 640
	SC13D13B	本色PTFE/本色Silicone隔墊, 13mm黑色實心聚丙烯蓋	100pcs/包 670

SC11F11A-1



SC11F11A



V11D V11A V11B V11C



SC13D13B



SC13A13A



V13D V13C V13B V13A



# 儲存瓶: EPA/Storage/VOA Vial

10-40ML玻璃樣品瓶、蓋墊  
玻璃微量樣品瓶

訂貨資訊		20190503 製表人 ver.10 Shelley	
以上報價均未稅			
產品圖示	產品型號	中文說明	包裝 末端 (TW)
<b>玻璃10-40ML樣品瓶、蓋墊</b>			
	V20A	透明螺旋儲存瓶 27.5x57mm	100pcs/盒 1040
	V30A	透明螺旋儲存瓶 27.5x75mm	100pcs/盒 1090
	V40A	透明螺旋儲存瓶 27.5x95mm	100pcs/盒 1440
	V40B	棕色螺旋儲存瓶 27.5x95mm	100pcs/盒 1440
	V60A	透明螺旋儲存瓶 27.5x140mm	100pcs/盒 1600
	S22A- I	本色PTFE/本色Silicone隔墊 22x3mm	100pcs/包 960
	S22A- II	本色PTFE/本色Silicone隔墊 22x1.5mm	100pcs/包 880
	SC22A22A	本色PTFE/本色Silicone隔墊 22mm白色開口聚丙烯螺旋蓋	100pcs/包 1120
	SC22A22B	本色PTFE/本色Silicone隔墊 22mm白色實心聚丙烯螺旋蓋	100pcs/包 1200
<b>玻璃微量樣品瓶</b>			
	IPA150	150ul, 適用8mm vial圓錐形 帶塑料支腳 玻璃內插管 29x5mm	100pcs/盒 1300
	IPB250	250ul, 適用9mm vial圓錐形 帶塑料支腳 玻璃內插管 29x5.7mm	100pcs/盒 1300
	IPB250-P	250ul, 適用9mm vial圓錐形 PP帶支腳內插管	200pcs/袋 2000
	IA250	150ul, 適用8mm vial玻璃瓶底內插管 31x5mm	100pcs/盒 510
	IB300	250ul, 適用9mm vial玻璃瓶底內插管 31x6mm	100pcs/盒 510
	V18A	1ml 透明玻璃進樣瓶 8X40mm, PE蓋	100pcs/盒 540



# 儲存瓶: EPA/Storage/VOA Vial

## 10-20ML玻璃鉗口瓶、螺紋瓶、蓋墊

玻璃樣品瓶 報價表			20190503 ver.10	製表人 Shelley
訂貨資訊			以上報價均未稅	
產品圖示	產品型號	中文說明	包裝	末端 (TW)
<b>10-20ml鉗口瓶、蓋墊</b>				
	VH10A	10ml 透明鉗口頂空瓶, 100/PK 22.5x46mm	100pcs/盒	650
	VH10B	10ml 茶色鉗口頂空瓶, 100/PK 22.5x46mm	100pcs/盒	700
	VH20A	20ml 透明鉗口頂空瓶 平底, 100/PK 22.5x75.5mm	100pcs/盒	650
	VH20B	20ml 茶色鉗口頂空瓶 平底, 100/PK 22.5x75.5mm	100pcs/盒	700
	C20A	20mm 銀色開口鋁蓋, 中間孔10mm, 100/PK	100pcs/盒	480
	S20B	20*3mm 米色PTFE/米色Silicone墊片, 100/PK	100pcs/盒	650
	SC20B20A	20mm 銀色開口鋁蓋, 20*3mm 米色PTFE/米色Silicone墊片	100pcs/盒	950
SBC20B20B	20mm 藍色開口磁性鋁蓋, 20*3mm 米色PTFE/米色Silicone墊片	100pcs/盒	1920	
<b>10-20ml螺紋瓶、蓋墊</b>				
	VA10A	10ml 透明螺紋瓶, 圓底, 100/PK	100pcs/盒	1680
	VA20A	20ml 透明螺紋瓶, 圓底, 100/PK	100pcs/盒	2080
	SACA00A	18mm 銀色磁性蓋+藍PTFE/白Silicone墊片, 100/PK	100pcs/盒	2240
	SA00A	17.5*1.5mm 藍PTFE/白Silicone墊片, 100/PK	100pcs/盒	880
<b>20ml閃爍技數瓶</b>				
	SC22WPEET+ V20A22ET	20ml白色實心蓋PE隔墊, 22mm+ 20ml透明樣品瓶, 27x58mm, 10盒/箱	100pcs/盒	1235





# 儲存瓶: EPA/Storage/VOA Vial

8ml/12ML 儲存瓶

300ul 微量融合瓶、聚丙烯微量融合瓶

## 玻璃樣品瓶 報價表

20190503

製表人

ver.10

Shelley

以上報價均未稅

訂貨資訊				以上報價均未稅	
產品圖示	產品型號	中文說明	包裝	末端 (TW)	
<b>8ml/12ML 儲存瓶</b>					
	V08A	8ml 透明旋口瓶 (17 x 60 mm) 100p/pk, 1800/ctn	100pcs/盒	1410	
	V08C	8ml 茶色旋口瓶 (17 x 60 mm) 100p/pk, 1800/ctn	100pcs/盒	1520	
	V12A	12ml 透明旋口瓶 18.75x65mm 100/pk	100pcs/盒	1600	
	V12C	12ml 茶色旋口瓶 18.75x65mm 100/pk	100pcs/盒	1680	
	SC15D15B	黑色實心蓋 本色P本色 for 8ml瓶 15.5 x10mm 100p/pk	100pcs/盒	1040	
<b>300ul 微量融合瓶</b>					
	VL9A	9mm 300ul 透明螺紋融合型樣品瓶 11.6*32mm	100pcs/盒	1600	
	VL9B	9mm 300ul 透明螺紋融合型樣品瓶 帶刻度書寫處 11.6*32mm	100pcs/盒	1760	
	VL9C	9mm 300ul 茶色螺紋融合型樣品瓶 11.6*32mm	100pcs/盒	1920	
	VL9D	9mm 300ul 透明螺紋融合型樣品瓶 帶刻度書寫處 11.6*32mm	100pcs/盒	2080	
<b>300ul 微量融合塑膠瓶</b>					
	VP9A	300ul 短螺紋微量透明進樣瓶 11.6x32mm	100pcs/盒	1520	
	VP9C	300ul 短螺紋微量棕色進樣瓶 11.6x32mm	100pcs/盒	1600	
	IPB250-P	250ul, 適用9mm vial圓錐形 PP帶支腳內插管	200pcs/盒	2000	





# 儲存瓶: EPA/Storage/VOA Vial

## 2ml/4ml 樣品瓶架

產品型號	品名	尺寸	孔數	材質	顏色	末端 (TW)
RV001	2ml 專用樣品瓶架	18.7x9.7x2.1 cm	50	聚丙烯 PP	藍色	560
RV002	4ml 專用樣品瓶架	23.6x11.6x2.8 cm	50	聚丙烯 PP	藍色	700

## 壓蓋、啟蓋器

產品型號	中文說明	包裝	末端
HD11-S	11mm 手動鉗口瓶壓蓋器 Manual Crimper	1支/盒	8500
HD20-S	20mm 手動鉗口瓶壓蓋器 Manual Crimper	1支/盒	8500
HD20-O	20mm 手動鉗口瓶開蓋器 Manual Decapper	1支/盒	8500
HD11-O	11mm 手動鉗口瓶開蓋器 Manual Decapper	1支/盒	8500

